

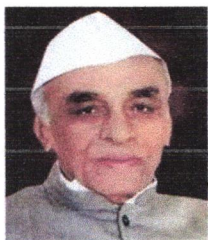
M.S.P.Mandal's  
**SUNDERRAO SOLANKE MAHAVIDYALAYA**  
MAJALGAON, DIST.BEED (MH)-431131  
NAAC Re-Accredited "A" Grade



## Feedback Analysis

### INDEX

Sr. No.	Content	Page No.
1.	Feedback on Curriculum by Student	
2.	Feedback on Teachers by Student	
3.	Feedback on Curriculum by Teacher	
4.	Feedback on Curriculum by Alumni	
5	Feedback on Curriculum by Employer	



M.S.P.Mandal's  
**UNDERRAO SOLANKE MAHAVIDYALAYA**  
MAJALGAON, DIST.BEED (MH)-431131  
NAAC Re-Accredited "A" Grade



## Feedback Analysis

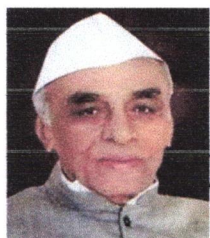
### A REPORT ON THE STUDENTS FEEDBACK ON TEACHERS

#### ACADEMIC YEAR 2023 – 2024

Feedback on curriculum collected from the students on Teachers of various discipline in the college for the academic year 2023-2024 on various important aspects which include:

1. Command on Language
2. Class Control
3. General Knowledge
4. Regularity and Punctuality
5. Skill in Explaining Difficult Points
6. Clarity in Approach and Thinking
7. Behaviour with Students
8. Usefulness in Counselling Personal Difficulties of Students
9. Teacher's Participation and Motivation in Extra- curricular Activities by students
10. Teacher's willingness to help Students by Conducting extra Classes
11. Commands on Subject
12. Use of Illustrations and Current Events in Teaching
13. frequency of Resolving students doubts & queries
14. Skill in Making the Subject Interesting
15. Frequency of asking short questions in class while teaching
16. Preparing students for University Exams
17. Use of Teaching Aids
18. Conducting Test and Tutorials
19. Providing sample questions and Model Answer
20. Assessment of Assignments Submitted by the Students

**1700 students participated in the survey consisting of 20 aspects/questions on curriculum.**



**M.S.P.Mandal's  
UNDERRAO SOLANKE MAHAVIDYALAYA**

MAJALGAON, DIST.BEED (MH)-431131

NAAC Re-Accredited "A" Grade



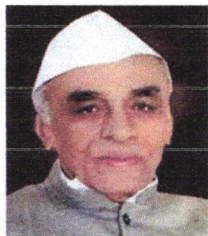
**Feedback Analysis**

**Summary of Feedback**

**STUDENTS FEEDBACK ON TEACHERS**

ACADEMIC YEAR 2023 – 2024

Sr. NO.	Parameters	Not at all	Slight	Moderate	Good	Extreme/Outstanding
1	Command on Language	250	120	120	310	900
2	Class Control	165	138	141	310	946
3	General Knowledge	184	138	135	393	850
4	Regularity and Punctuality	112	129	134	405	920
5	Skill in Explaining Difficult Points	162	127	120	366	925
6	Clarity in Approach and Thinking	130	100	118	372	980
7	Behaviour with Students	152	102	122	354	970
8	Usefulness in Counselling Personal Difficulties of Students	164	135	107	364	930
9	Teacher's Participation and Motivation in Extra- curricular Activities by students	160	103	147	362	928
10	Teacher's willingness to help Students by Conducting extra Classes	154	121	138	337	950
11	Commands on Subject	122	133	147	398	900
12	Use of Illustrations and Current Events in Teaching	153	138	138	354	917
13	frequency of Resolving students doubts & queries	168	117	167	396	852
14	Skill in Making the Subject Interesting	156	117	179	323	925



**M.S.P.Mandal's  
UNDERRAO SOLANKE MAHAVIDYALAYA**

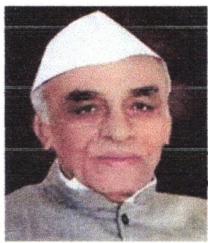
MAJALGAON, DIST.BEED (MH)-431131

*NAAC Re-Accredited "A" Grade*



**Feedback Analysis**

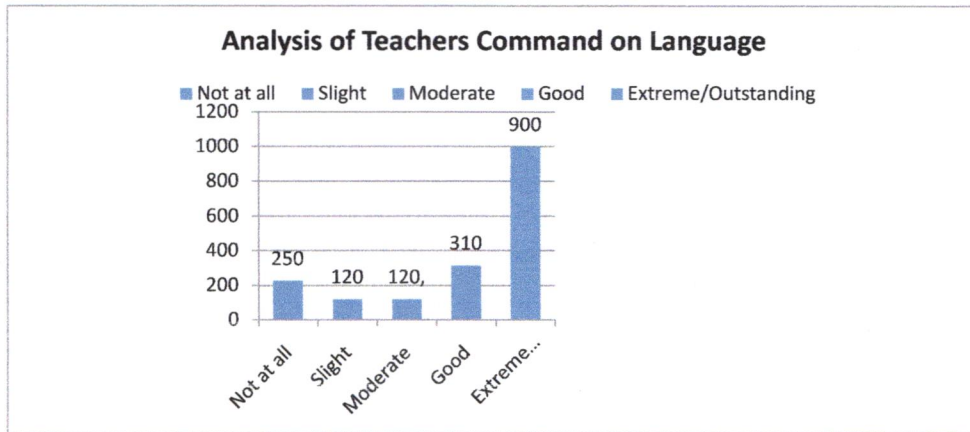
15	Frequency of asking short questions in class while teaching	152	134	118	386	910
16	Preparing students for University Exams	176	114	120	321	969
17	Use of Teaching Aids	160	115	123	382	920
18	Conducting Test and Tutorials	121	115	125	349	990
19	Providing sample questions and Model Answer	160	100	110	360	970
20	Assessment of Assignments Submitted by the Students	165	115	113	327	980



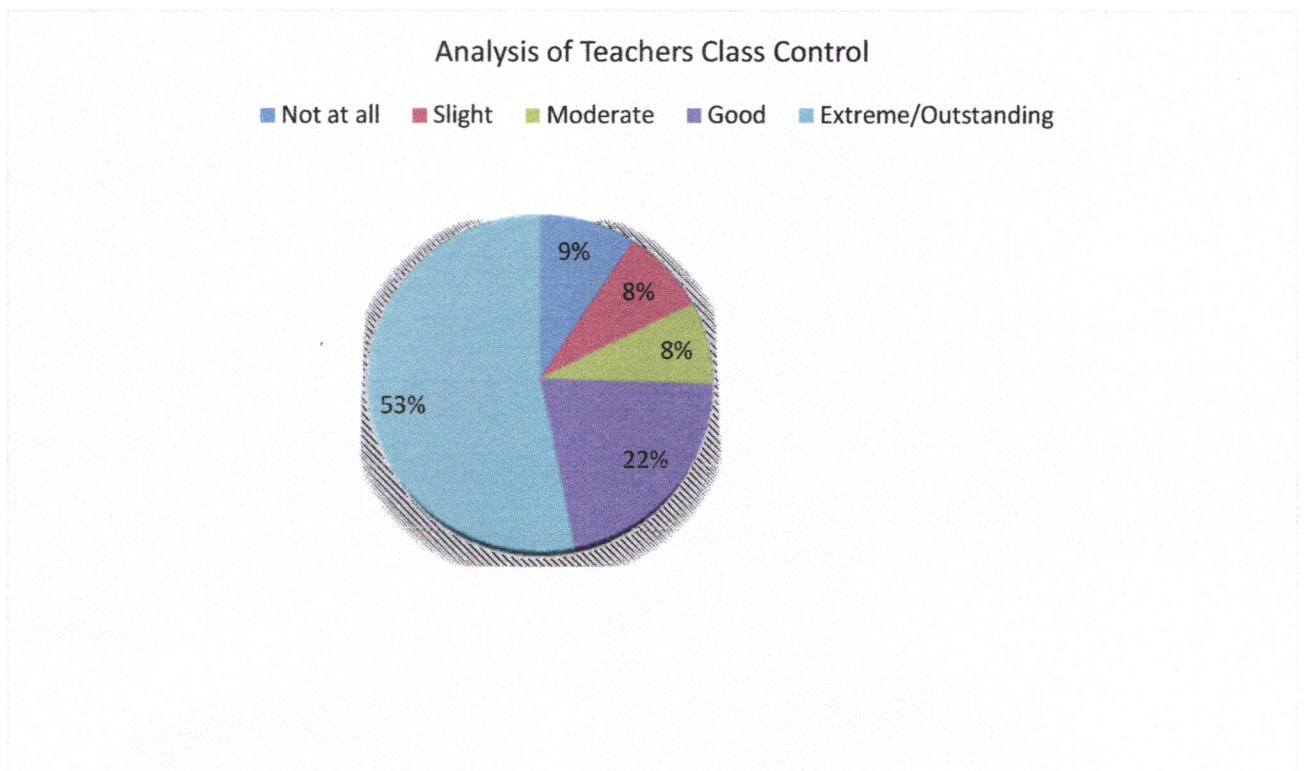
## Feedback Analysis

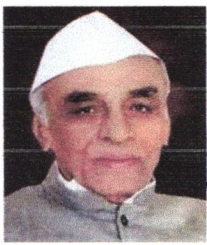
### 1. Command on Language

Responses: 1700



### 2. Class Control Responses:1700

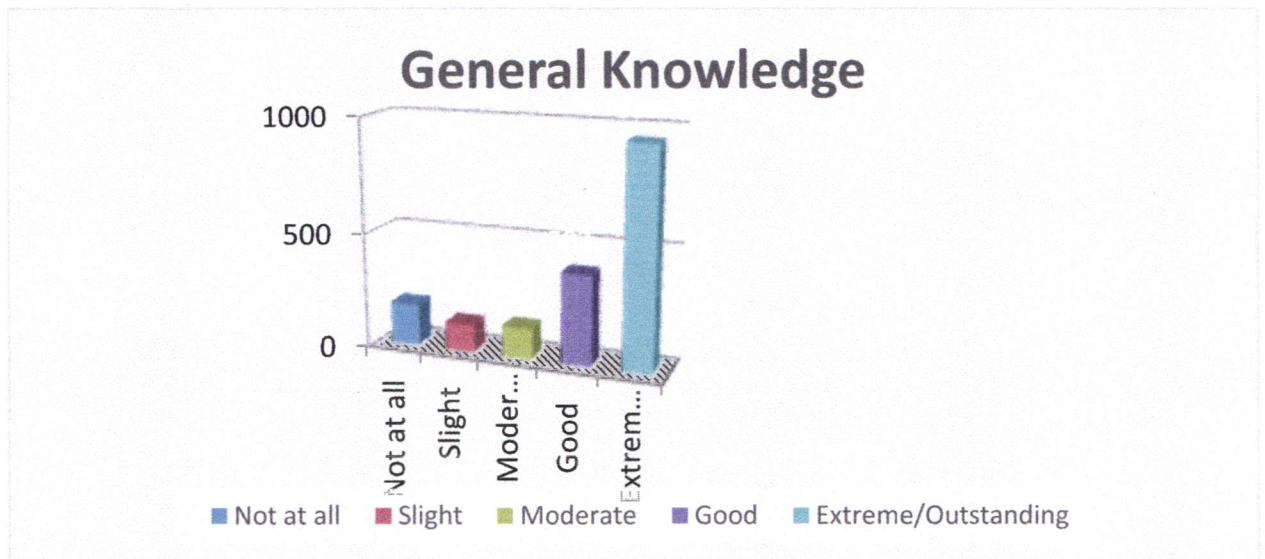




## Feedback Analysis

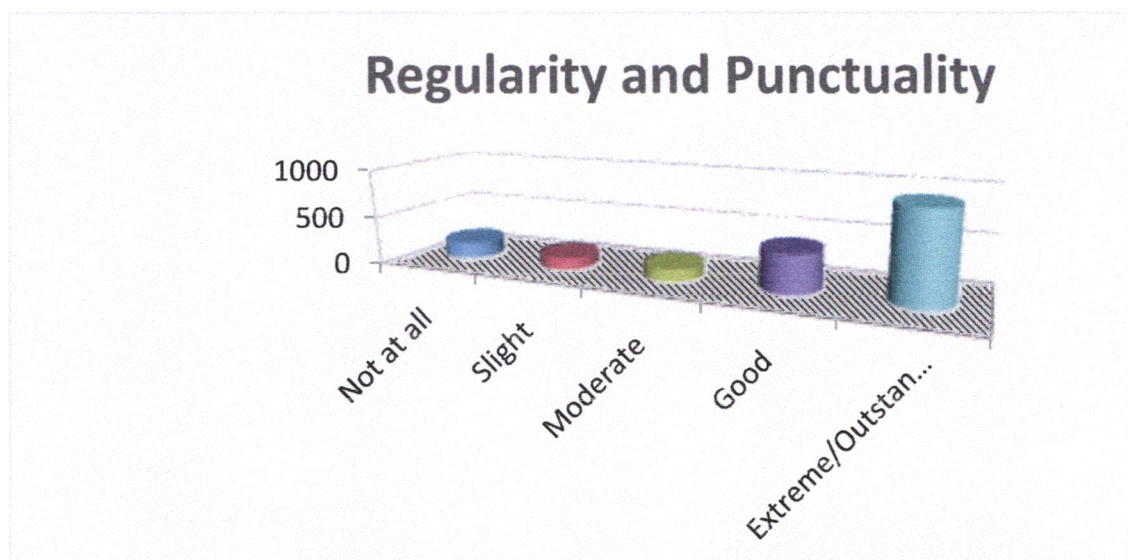
### 3. General Knowledge

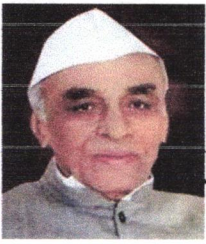
Responses: 1700



### 4. Regularity and Punctuality

Responses: 1700

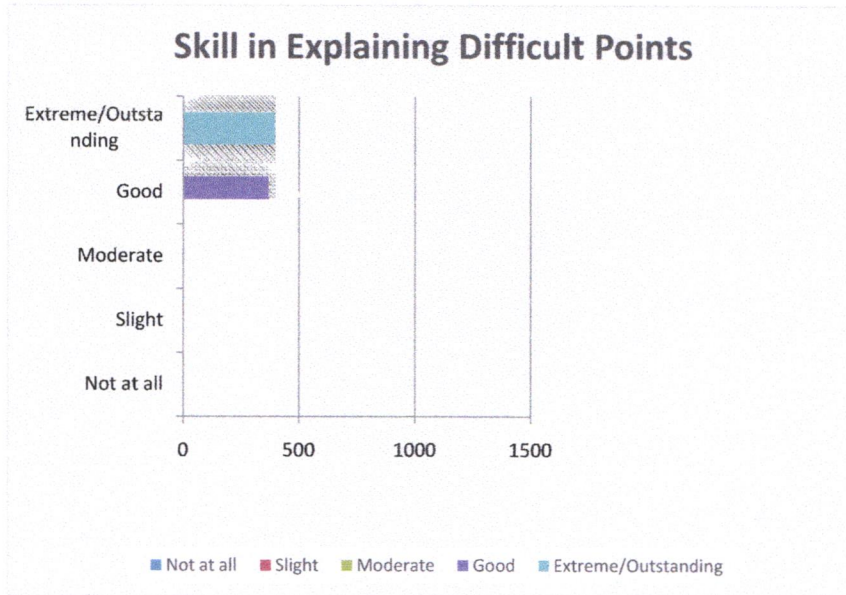




## Feedback Analysis

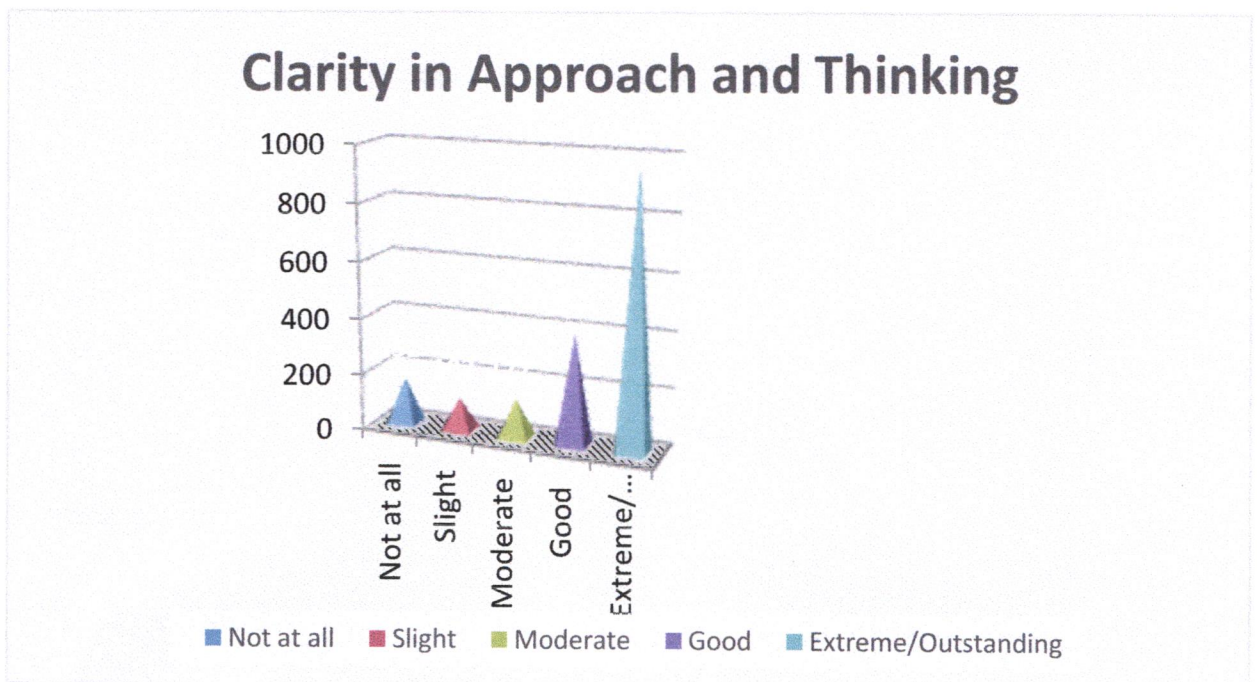
### 5. Skill in Explaining Difficult Points

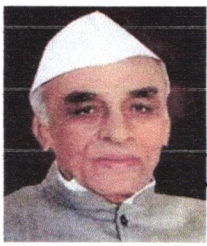
Responses: 1700



### 6. Clarity in Approach and Thinking

Responses: 1700

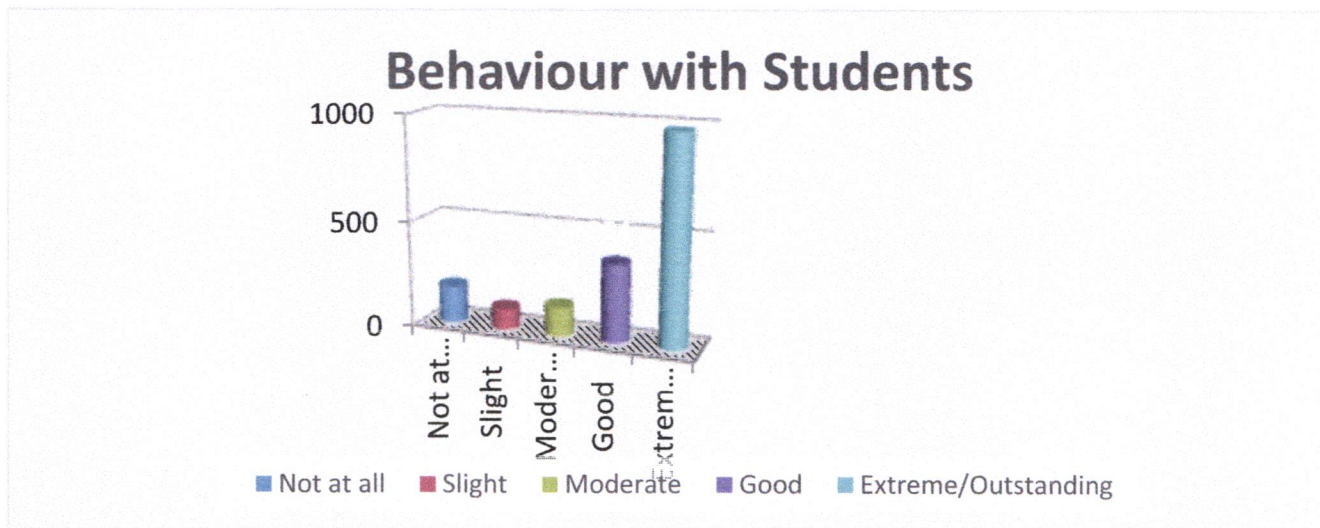




## Feedback Analysis

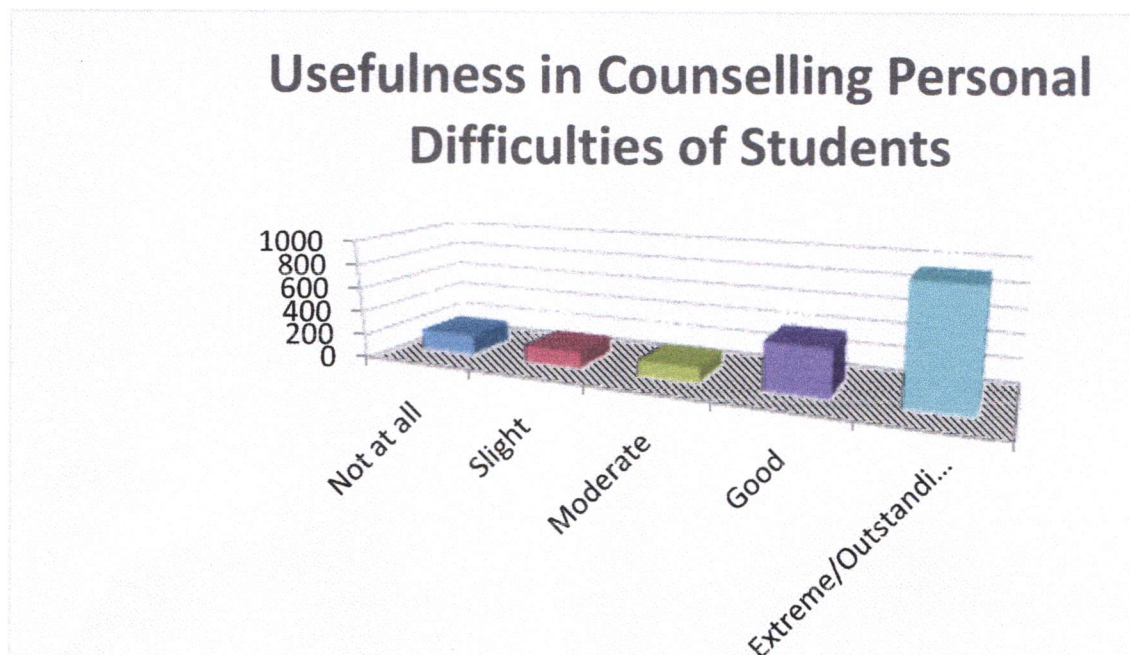
### 7. Behaviour with Students

Responses: 1700

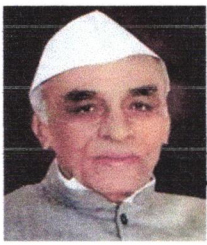


### 8. Usefulness in Counselling Personal Difficulties of Students

Responses: 1700



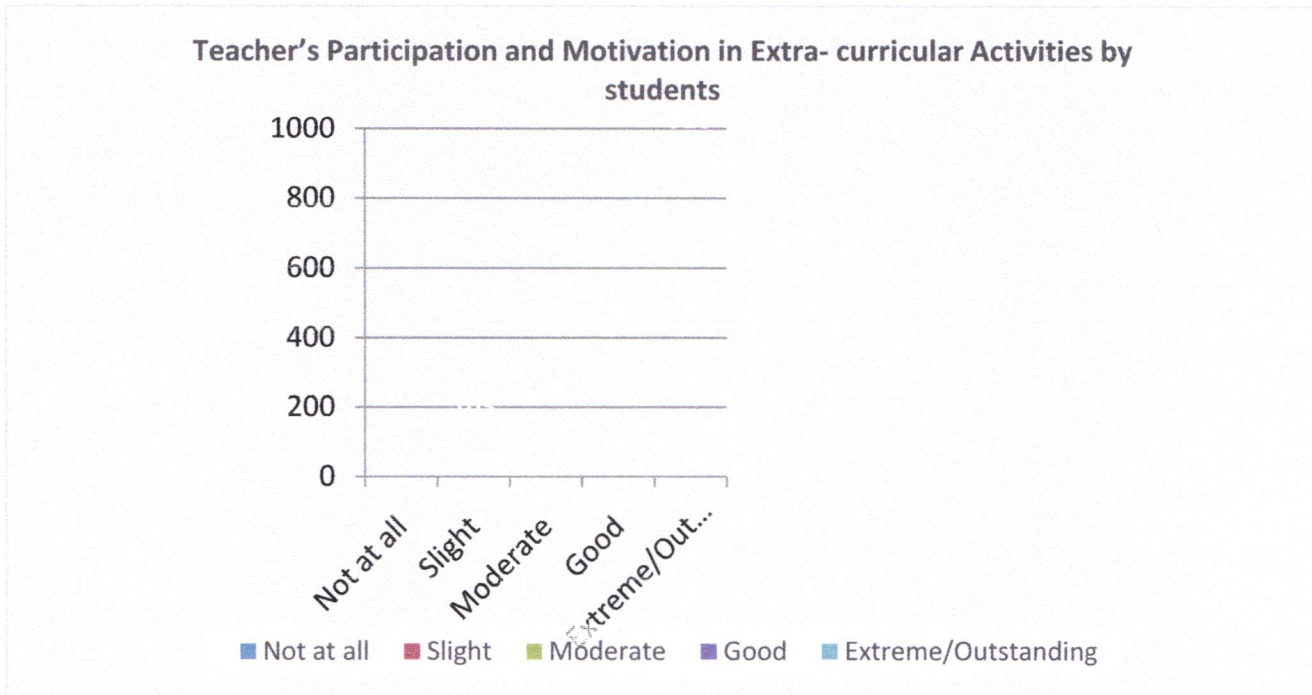




## Feedback Analysis

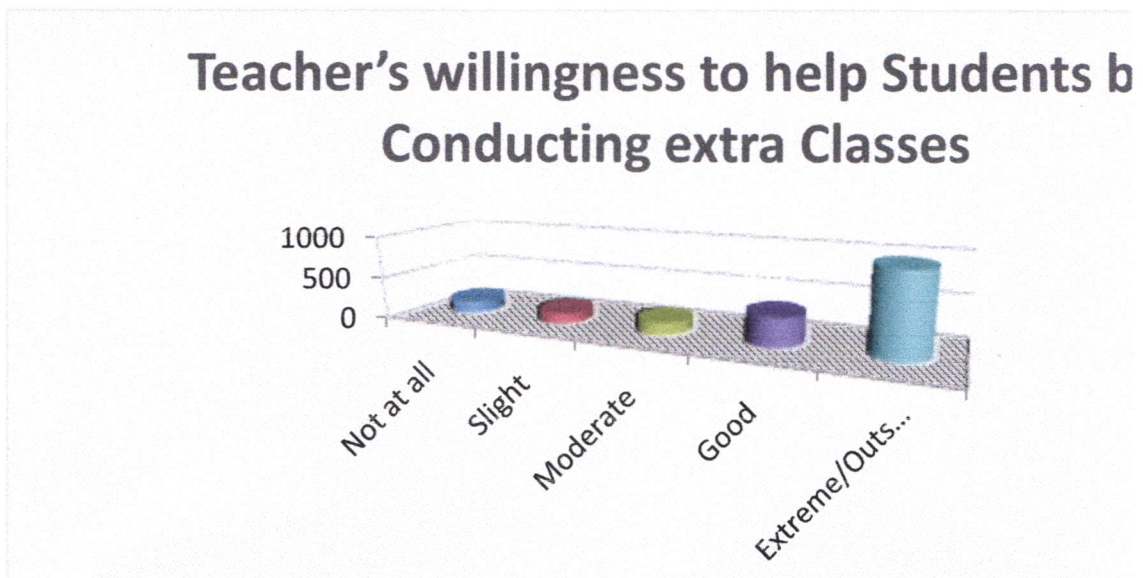
### Teacher's Participation and Motivation in Extra- curricular Activities by students

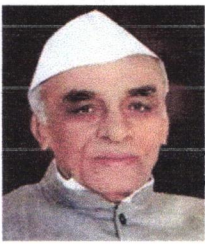
Responses: 1700



### 9. Teacher's willingness to help Students by Conducting extra Classes

Responses: 1700

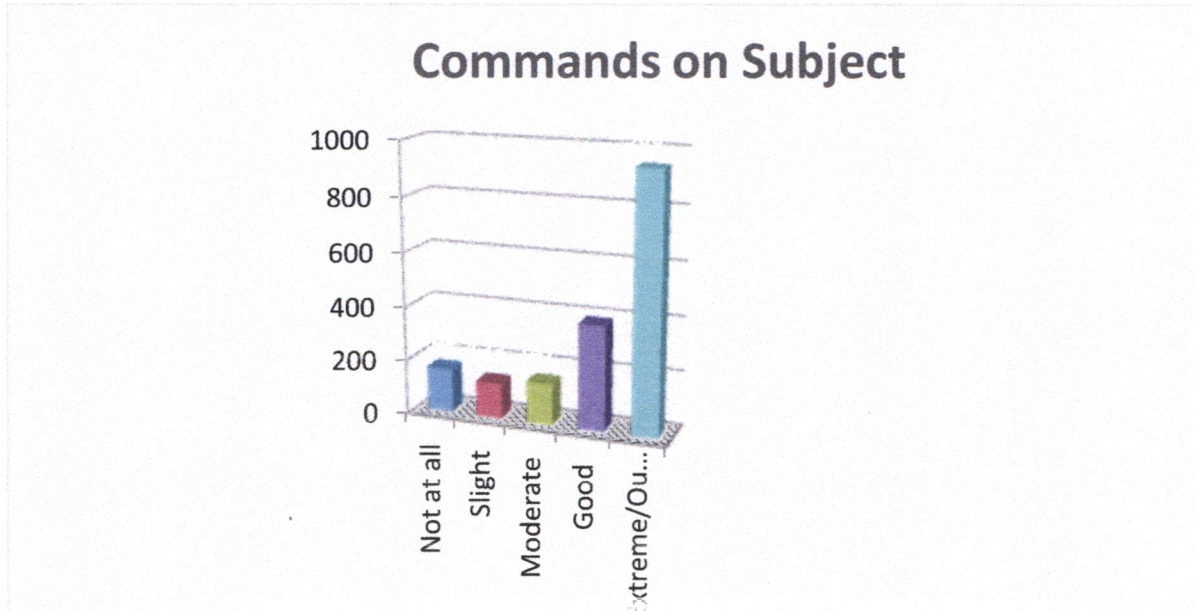




## Feedback Analysis

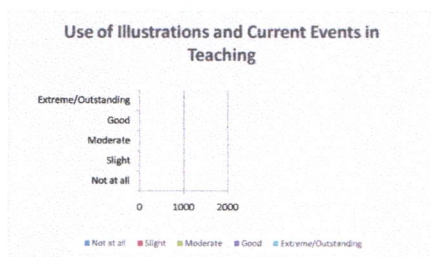
### 10. Commands on Subject

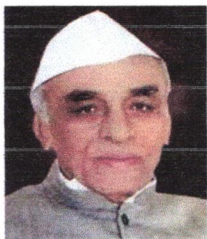
Responses: 1700



### 11. Use of Illustrations and Current Events in Teaching

Responses: 1700

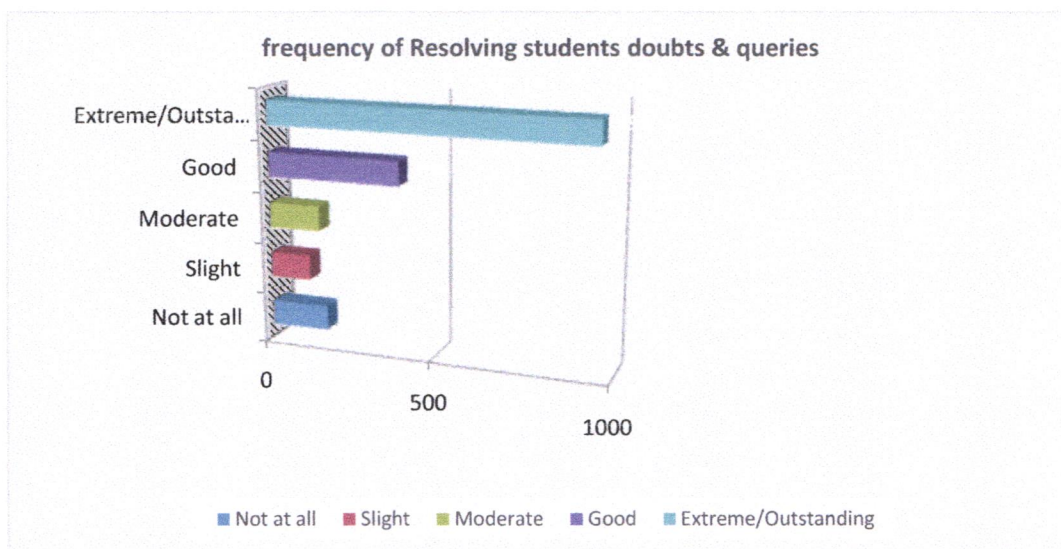




## Feedback Analysis

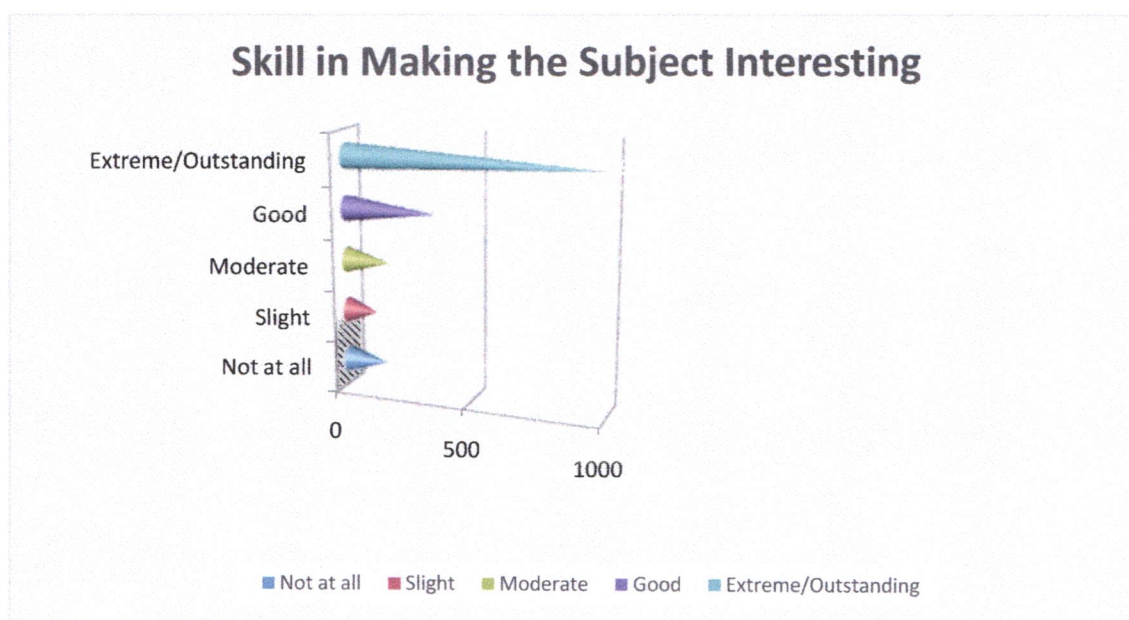
### 12. frequency of Resolving students doubts & queries

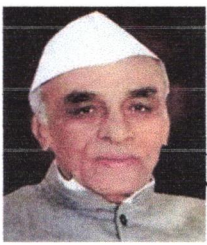
Responses: 1700



### 13. Skill in Making the Subject Interesting

Responses: 1700

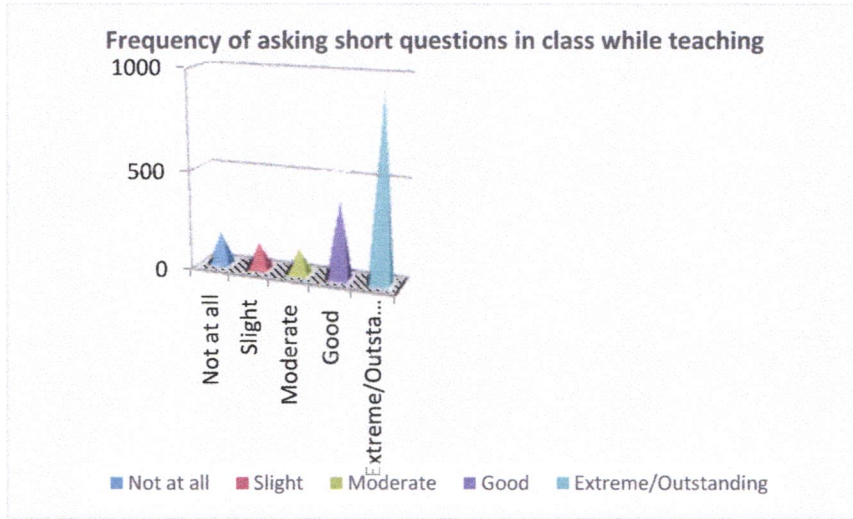




## Feedback Analysis

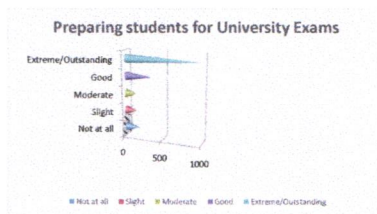
### 14. Frequency of asking short questions in class while teaching

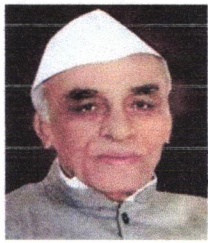
Responses: 1700



### 15. Preparing students for University Exams

Responses: 1700

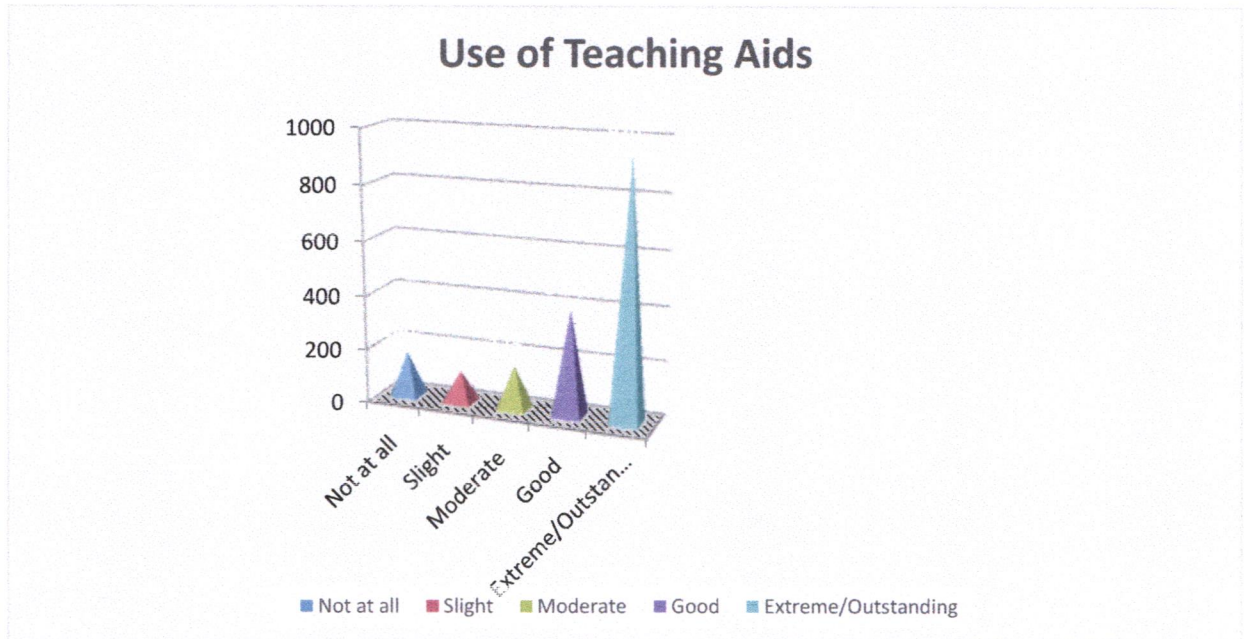




## Feedback Analysis

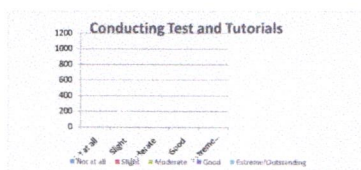
### 16. Use of Teaching Aids

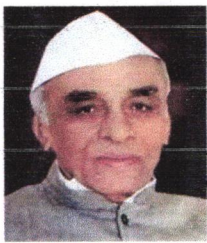
Responses: 1700



### 17. Conducting Test and Tutorials

Responses: 1700

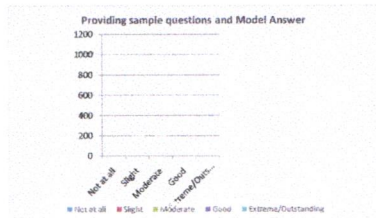




## Feedback Analysis

### 18. Providing sample questions and Model Answer

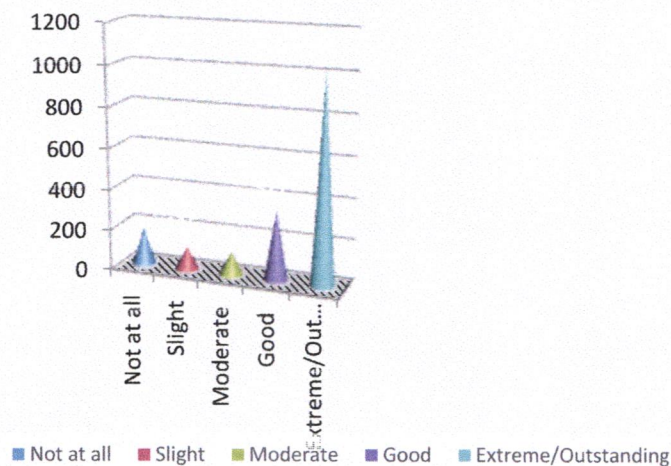
Responses: 1700

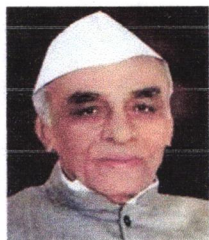


### 19. Assessment of Assignments Submitted by the Students

Responses: 1700

#### Assessment of Assignments Submitted by the Students





M.S.P.Mandal's  
**UNDERRAO SOLANKE MAHAVIDYALAYA**

MAJALGAON, DIST.BEED (MH)-431131

NAAC Re-Accredited "A" Grade



## Feedback Analysis

### Respondent Details:

#### 1. Command on Language

From total 1700 respondents, maximum 900 students rated as outstanding, 310 good, 120 moderate, 120 slight and 250 rated as not at all.

#### 2. Class Control

946 students think teachers class control is outstanding, 310 respondents says good, 141 moderate, 138 slight while 165 rated not at all class control.

#### 3. General Knowledge

From total 1700 student respondents maximum (850) rated general knowledge of teachers extreme. 393 says good, 135 moderate, 138 slight and 184 opined as not at all.

#### 4. Regularity and Punctuality

Maximum (920) student respondent opined for extreme/outstanding- regularity and punctuality of teachers. 405 rated as good, 134 moderate, 129 slight and 112 students opined not at all.

#### 5. Skill in Explaining Difficult Points

Out of total 1700 students respondent maximum 925 rated the skill of explaining different points of teachers as outstanding. 366 good, 120 moderate, 127 slight and 162 opined not at all.

#### 6. Clarity in Approach and Thinking

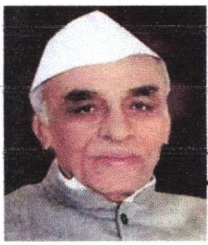
Maximum (980) student respondent think the clarity in approach and thinking of teachers is outstanding. 372 as good, 118 moderate, 100 slight and 130 opined as not at all.

#### 7. Behaviour with Students

From total 1700 respondents highest that is 970 students think the behavior of teachers towards them is extreme/outstanding. 354 as good, 122 moderate, 102 slight while 152 opined for not at all.

#### 8. Usefulness in Counselling Personal Difficulties of Students

930 opined for outstanding, 364 good, 107 moderate, 135 slight and 164 student respondent opined for not at all for respective category.



## Feedback Analysis

### 9. Teacher's Participation and Motivation in Extra- curricular Activities by students

Highest that is 928 student taught teachers participation and motivation in extracurricular activities is extreme. 362 think as good, 147 moderate, 103 slight and 160 opined as not at all.

### 10. Teacher's willingness to help Students by Conducting extra Classes

950 respondents rated teachers willingness to help them as outstanding. 377 good, 138 as moderate, 121 slight and 154 of total 1700 opined for not at all in this aspect.

### 11. Commands on Subject

The maximum i.e. 900 student thinks teachers command on subject is outstanding while 398 thinks good, 147 moderate, 133 slight, 122 opined for not at all.

### 12. Use of Illustrations and Current Events in Teaching

From total 1700 respondents, maximum (917) rated the teachers use of illustrations and current events in teaching as extreme. 354 as good, 138 as moderate, 138 slight and 153 as not at all.

### 13. frequency of Resolving students doubts & queries

852 respondent opines as extreme, 396 good, 167 slight, 117 slight while 168 as not at all frequent in doubt solving.

### 14. Skill in Making the Subject Interesting

Highest that is 925 students think skill of teachers in making subject interesting is outstanding. 323 as good, 179 as moderate, 117 slight and 156 opined not at all in this aspect.

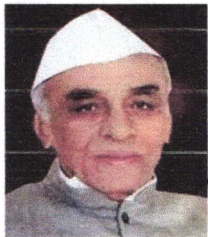
### 15. Frequency of asking short questions in class while teaching

Out of total 1700 respondents the maximum (910) opined the frequency of asking short questions in class while teaching by teachers is extreme. 386 as good, 134 moderate, 152 slight and 167 opined it as not at all.

### 16. Preparing students for University Exams

Highest 969 respondents opined preparation of students for exams by teachers as extreme. 321 as good, 120 moderate, 114 slight and 176 opined for not at all.





**M.S.P.Mandal's  
UNDERRAO SOLANKE MAHAVIDYALAYA**

MAJALGAON, DIST.BEED (MH)-431131

NAAC Re-Accredited "A" Grade



## Feedback Analysis

### 17. Use of Teaching Aids

Out of 1700 student respondents, 920 opined teaching aids use by teachers as extreme. 382 as good, 123 moderate, 115 slight while 160 opined for not at all.

### 18. Conducting Test and Tutorials

The highest response received for this particular question as outstanding or extreme i.e. of 990 out of 1700. 349 as good, 125 as moderate, 115 slight and 121 as not at all.

### 19. Providing sample questions and Model Answer

970 students rated teachers for providing sample question and model answer as outstanding. 360 as good, 110 moderate, 100 slight and 160 opined for not at all.

### 20. Assessment of Assignments Submitted by the Students

Highest that is 980 respondents found teachers assessment of assignments submitted by students extreme while 327 opined for good, 113 moderate, 115 slight and 165 as not at all.

### Conclusion:

The consolidated feedback report of students is shared with the all HOD's / Coordinators / Officials of different departments for further appropriate action and decision making in this respect.

**IQAC Coordinator**

**Principal**

SS



**A REPORT ON TEACHER FEEDBACK ON CURRICULUM  
ACADEMIC YEAR 2023-2024**

Online feedback on curriculum collected from the employer for the academic year 2023-2024 on various important aspects which include:

1. Applicability of the syllabus to local developmental needs
2. Difficulty level of the syllabus
3. Clarity about the course objectives
4. Weightage given to employability
5. Depth of the course content
6. Incorporation of latest knowledge & information
7. Research Possibilities
8. Mechanism used for development/ revision of curriculum by BoS
9. Weightage given to learning values like knowledge, skills, analytical abilities, etc.
10. Relevance of course outcomes
11. Quality and clarity of textual/ study/ reference material suggested
12. Overall rating.

**40 Teachers participated in the survey consisting of 12 aspects/questions.**



**Summary of Feedback**  
**TEACHERS FEEDBACK ON CURRICULUM**  
**ACADEMIC YEAR 2023-24**

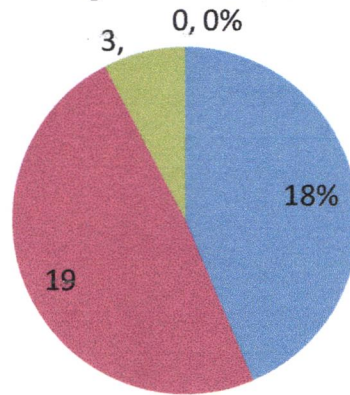
Sr. NO.	PARAMETERS	Excell ent	Go od	Aver age	Below Average
1	Applicability of the syllabus to local developmental needs	18	19	3	0
2	Difficulty level of the syllabus	11	24	5	0
3	Clarity about the course objectives	22	16	2	0
4	Weight age given to employability	16	17	5	0
5	Depth of the Course Content	18	19	3	0
6	Incorporation of latest knowledge & information	20	16	4	0
7	Research Possibilities	14	19	6	1
8	Mechanism used for development/ revision of curriculum by BoS	13	20	7	0
9	Weightage given to learning values like knowledge, skills, analytical abilities, etc.	21	15	4	0
10	Relevance of course outcomes	12	25	3	0
11	Quality and clarity of textual/ study/ reference material suggested	14	24	2	0
12	Overall rating	20	20	0	0



**1. Applicability of the syllabus to local developmental needs**

Responses: 40

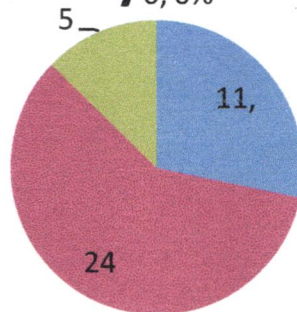
**Applicability of the syllabus to local developmental needs**



**1. Difficulty level of the syllabus**

Responses: 40

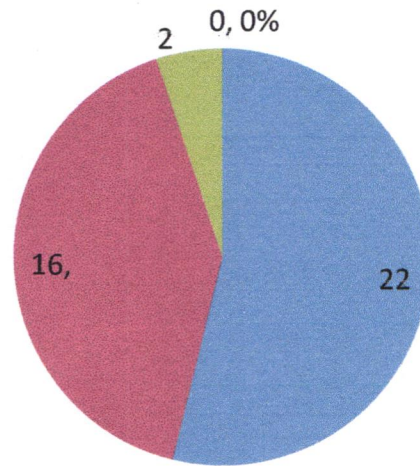
**Difficulty level of the syllabus**



2. Clarity about the course objectives

Responses: 40

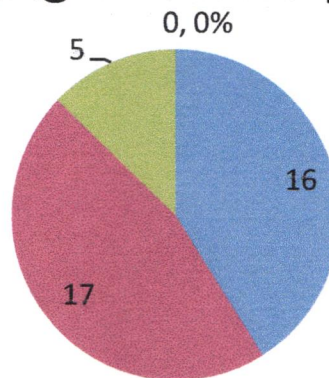
Clarity about the course objectives



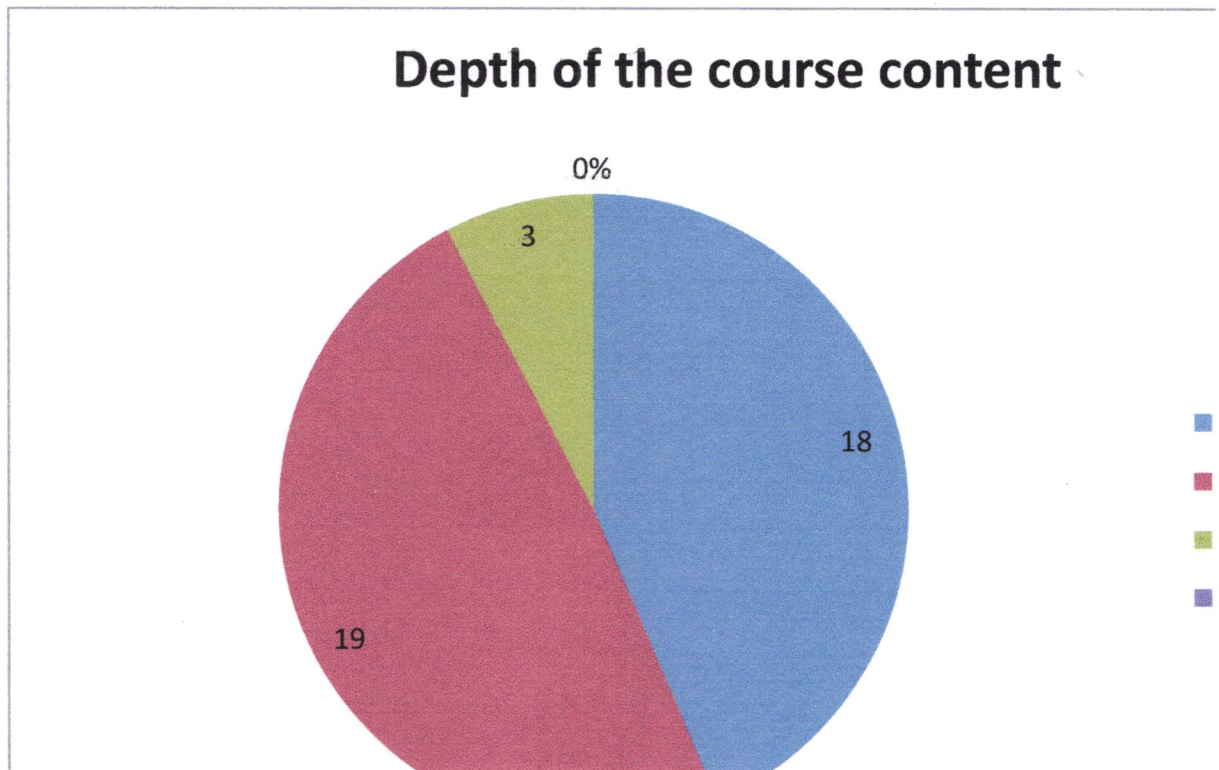
3. Weightage given to employability

Responses: 40

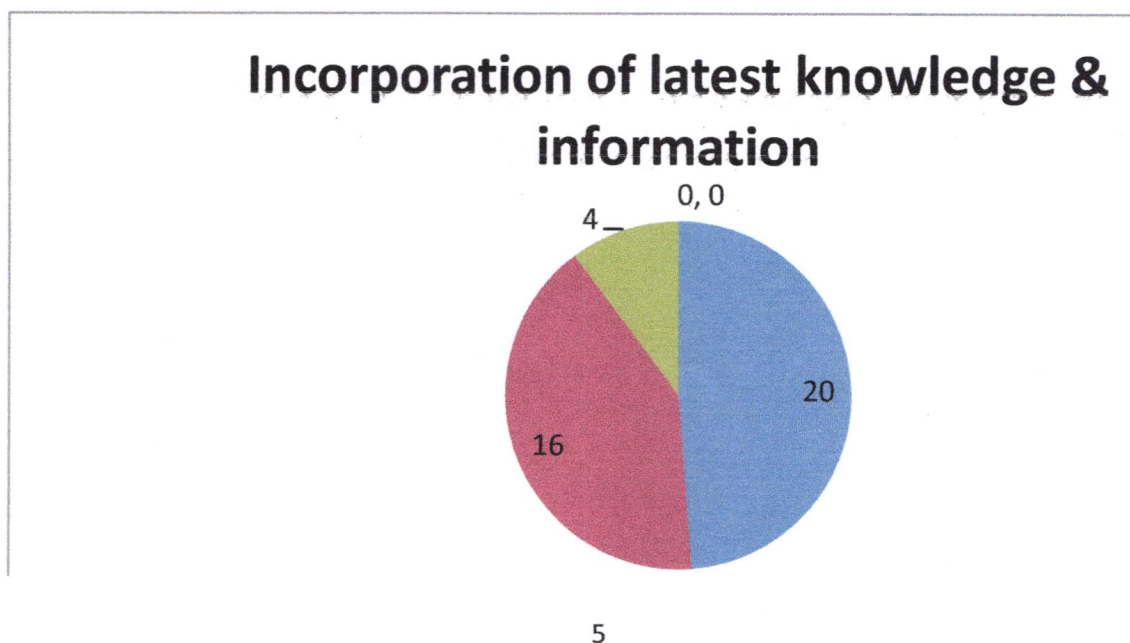
Weightage given to employability



**5. Depth of the Course Content**  
Responses: 40

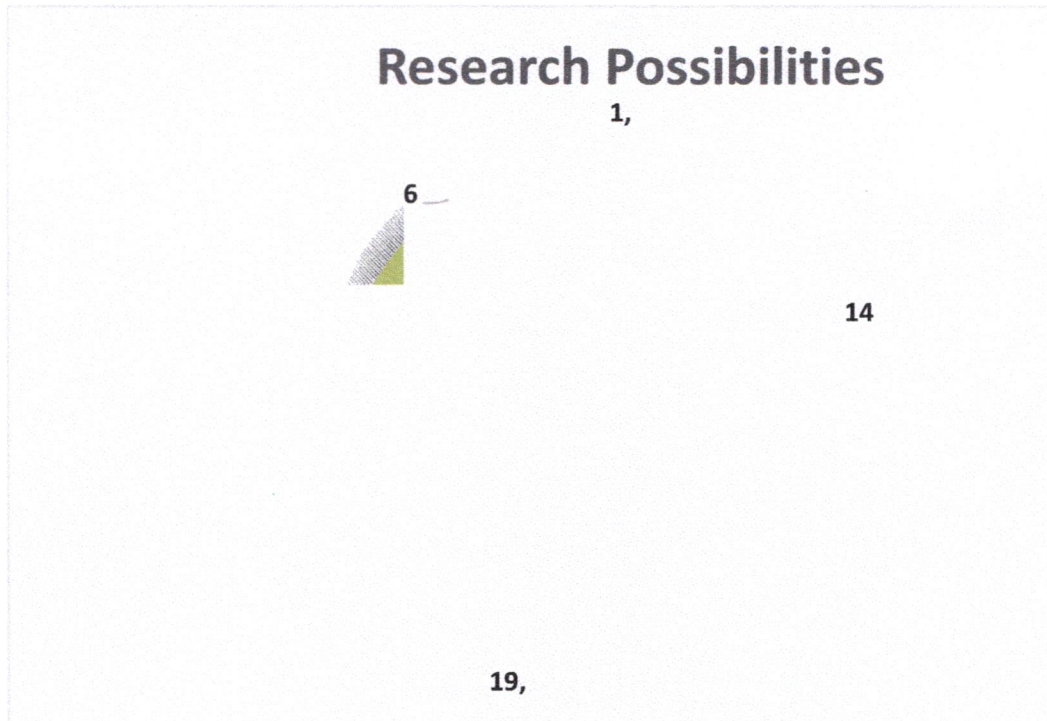


**6. Incorporation of latest knowledge & information**  
Responses: 40



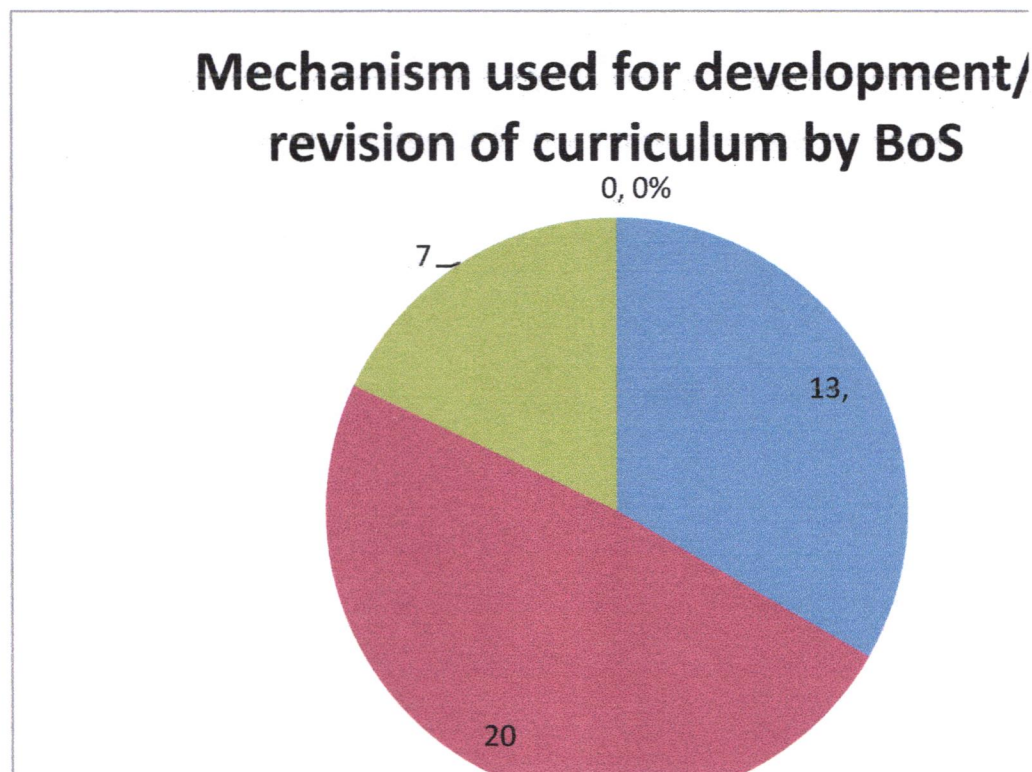
7. **Research Possibilities**

Responses: 40



8. **Mechanism used for development/ revision of curriculum by BoS**

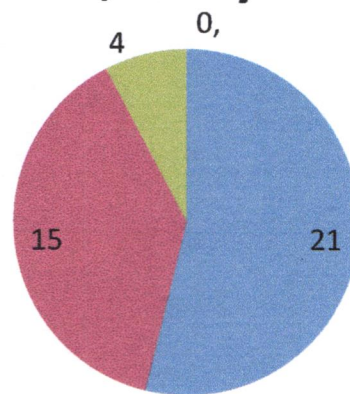
Responses: 40



**9. Weightage given to learning values like knowledge, skills, analytical abilities, etc.**

Responses: 40

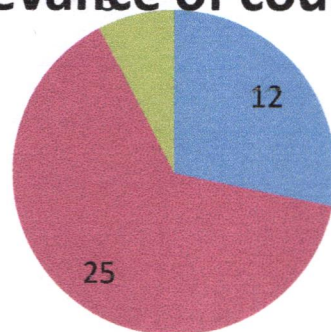
**Weightage given to learning values like knowledge, skills, analytical abilities, etc.**



**10. Relevance of course outcomes**

Responses: 40

**Relevance of course outcomes**

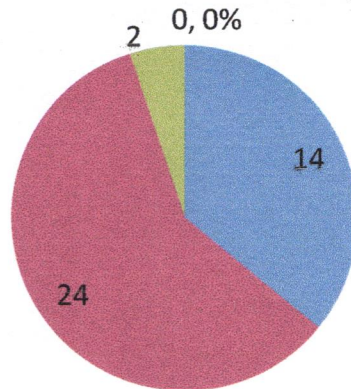


**11. Quality and clarity of textual/ study/ reference material suggested**

Responses: 40



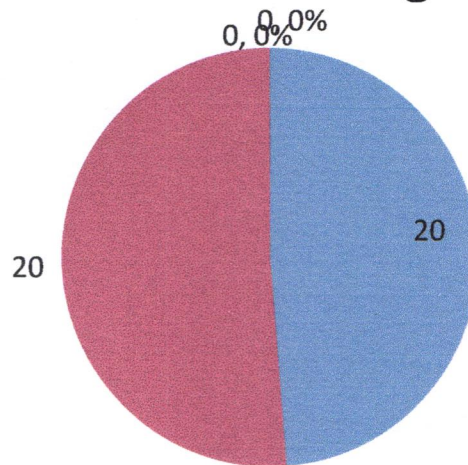
## Quality and clarity of textual/ study/ reference material suggested



### 12. Overall rating

Responses: 40

## Overall rating



## Respondents Details:

### A. Applicability of the syllabus to local developmental needs

From the total 40 Teachers respondents, maximum 18 respondents rated as excellent in respect of Applicability of the syllabus to local developmental need followed, by 19 respondent, rated it as good

### B. Difficulty level of the syllabus

It is found that the maximum 11 of Teachers respondent opined that the difficulty level of the syllabus was excellent, 24 thinks as good, 5 replied as it is average.

### C. Clarity about the course objectives

The 22 respondents from the total Teachers noted that clarity about the course objectives in curriculum found excellent; followed by 16 remarked as good.

### D. Weightage given to employability

From the total 40 respondents, 16 of respondents opined that the Weighted given to employability found excellent and 17 opined it is good.

### E. Depth of the Course Content

It is found that the 18 number of Teachers opined that the depth of the Course Content is found excellent. 19 Teachers think in this case as good.

### F. Incorporation of latest knowledge & information

The collected information indicates that the maximum number of respondents 20 found the Incorporation of latest knowledge & information, followed by 16 says it is good.

### G. Research Possibilities

From the total 40 respondents, 14 Teachers rated the Research possibilities is found excellent and majority of 19 respondents rated to Research possibilities is as good, 6 respondents says it is average.

### H. Mechanism used for development/ revision of curriculum by BoS

It is observed that 13 of the Teachers feel that Mechanism used for development/ revision of curriculum by BoS is excellent, followed by majority 20 of the responded as good, 7 respondents says it is average.

### I. Weightage given to learning values like knowledge, skills, analytical abilities, etc.

From the total 40 Teachers respondents, highest 21 of the respondents opined that Weightage given to learning values like knowledge, skills, analytical abilities, etc. found excellent. 15 respondents of them opined as good.

### J. Relevance of course outcomes

From the total 40 Teachers respondents, 12 opined that the Relevance of course outcomes is found

excellent, followed by majority 25 of them opined as good, 3 thinks that it is Average.

**K. Quality and clarity of textual/ study/ reference material suggested**

It is found that 14 of Teachers feels that Quality and clarity of textual/study/ reference material suggested opined as excellent, followed by majority 24 of them opined as it is good.

**L. Overall rating**

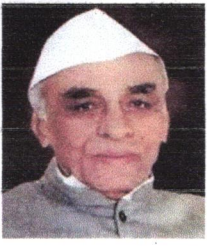
It is found that maximum 20 of Teachers rated to excellent; followed by 20 think it is good.

**Conclusion:**

The consolidated feedback report of Teachers is shared with the all HOD's /Coordinators / Officials of different departments for further appropriate action and decision making in this respect.

**IQAC Coordinator**

**Principal**



M.S.P.Mandal's  
**SUNDERRAO SOLANKE MAHAVIDYALAYA**  
MAJALGAON, DIST.BEED (MH)-431131  
*NAAC Re-Accredited "A" Grade*

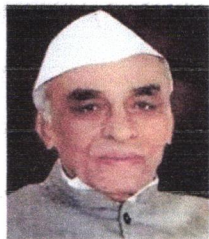


**A REPORT ON ALUMNI FEEDBACK ON CURRICULUM**  
**ACADEMIC YEAR 2023 – 2024**

Online feedback on curriculum collected from the alumni for the academic year 2023-2024 on various important aspects which include:

1. Fulfillment of my learning needs
2. Applicability of the curriculum to real life situations
3. Clarity about the course objectives
4. Weightage given to employability
5. Weightage given to skill development
6. Weightage given to entrepreneurship
7. Difficulty level of the course content
8. Promotion of independent thinking by curriculum
9. Usefulness of the curriculum at workplace
10. Usefulness of the curriculum in my higher education
11. Fulfilment of learning objectives
12. Overall rating

**66 Alumni participated in the survey consisting of 12 aspects/questions.**



M.S.P.Mandal's  
**SUNDERRAO SOLANKE MAHAVIDYALAYA**

MAJALGAON, DIST.BEED (MH)-431131

NAAC Re-Accredited "A" Grade



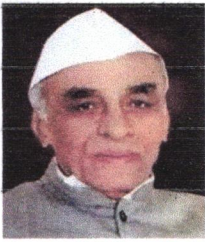
**Feedback Analysis**

**Summary of Feedback**

**ALUMNI FEEDBACK ON CURRICULUM**

**ACADEMIC YEAR 2023 – 2024**

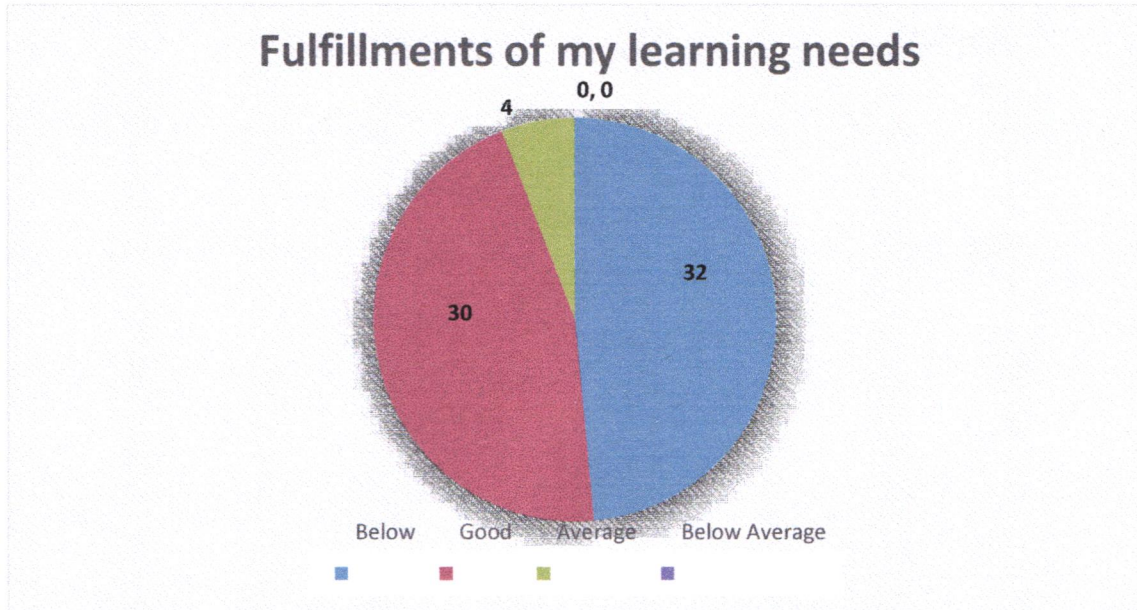
Sr. NO.	PARAMETERS	Excellent	Good	Average	Below Average
1	Fulfillment of my learning needs	32	30	4	0
2	Applicability of the curriculum to real life situations	28	31	6	1
3	Clarity about the course objectives	32	26	8	0
4	Weightage given to employability	26	33	6	1
5	Weightage given to skill development	30	31	5	0
6	Weightage given to entrepreneurship	23	32	8	3
7	Difficulty level of the course content	29	26	8	3
8	Promotion of independent thinking by curriculum	25	34	6	1
9	Usefulness of the curriculum at workplace	27	28	9	2
10	Usefulness of the curriculum in my higher education	33	23	8	2
11	Fulfillment of learning objectives	28	33	3	2
12	Overall rating	33	28	5	0



## Feedback Analysis

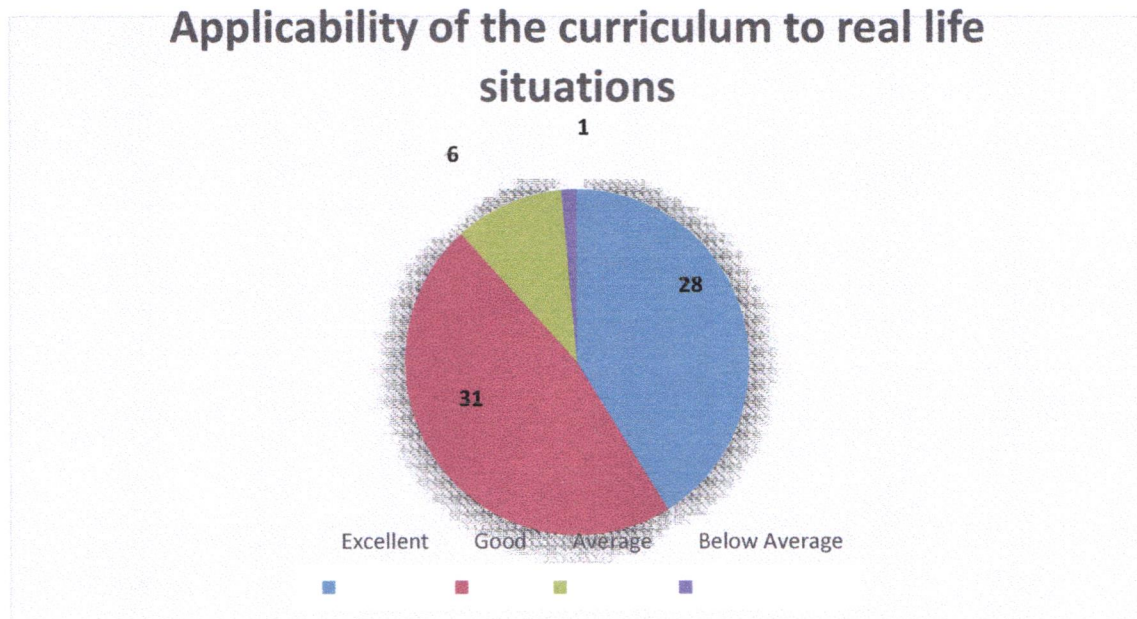
### 1. Fulfillments of my learning needs

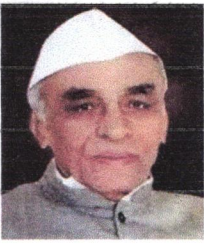
Responses: 66



### 2. Applicability of the curriculum to real life situations

Responses: 66

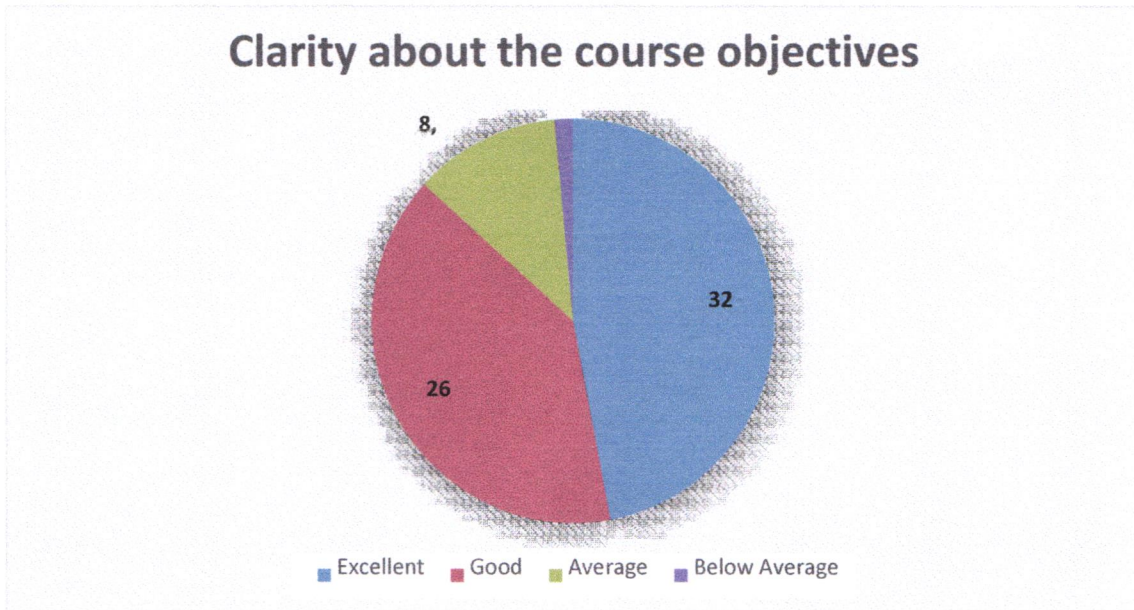




### Feedback Analysis

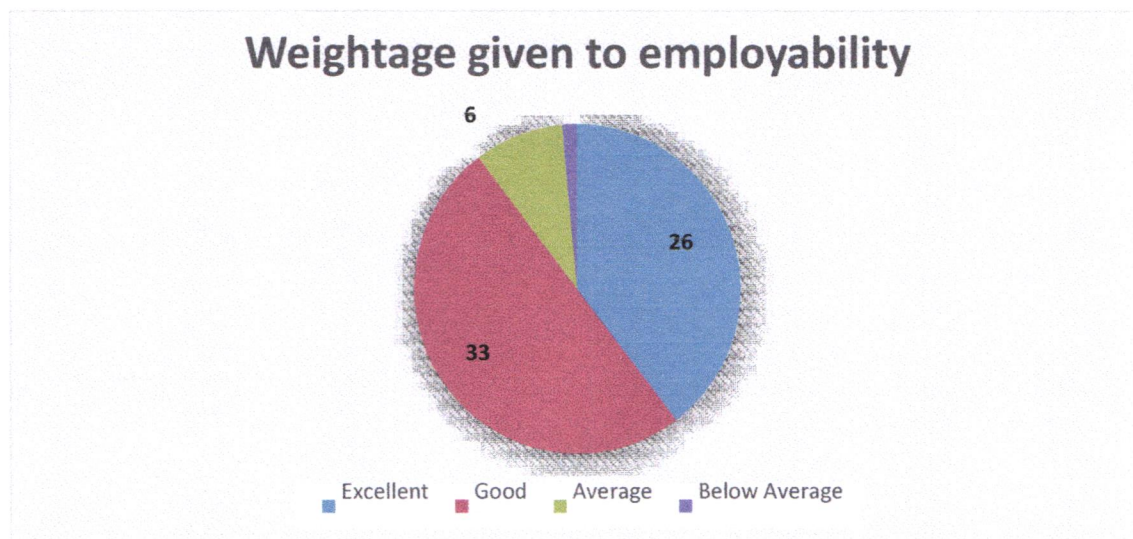
#### 3. Clarity about the course objectives

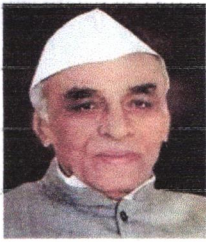
Responses: 66



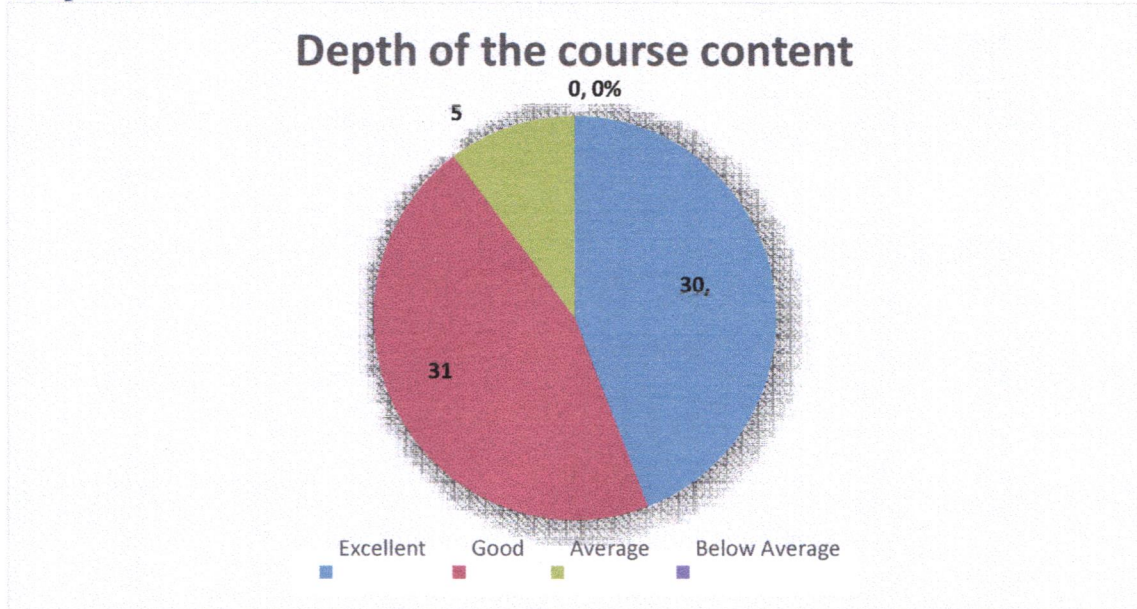
#### 4. Weightage given to employability

Responses: 66

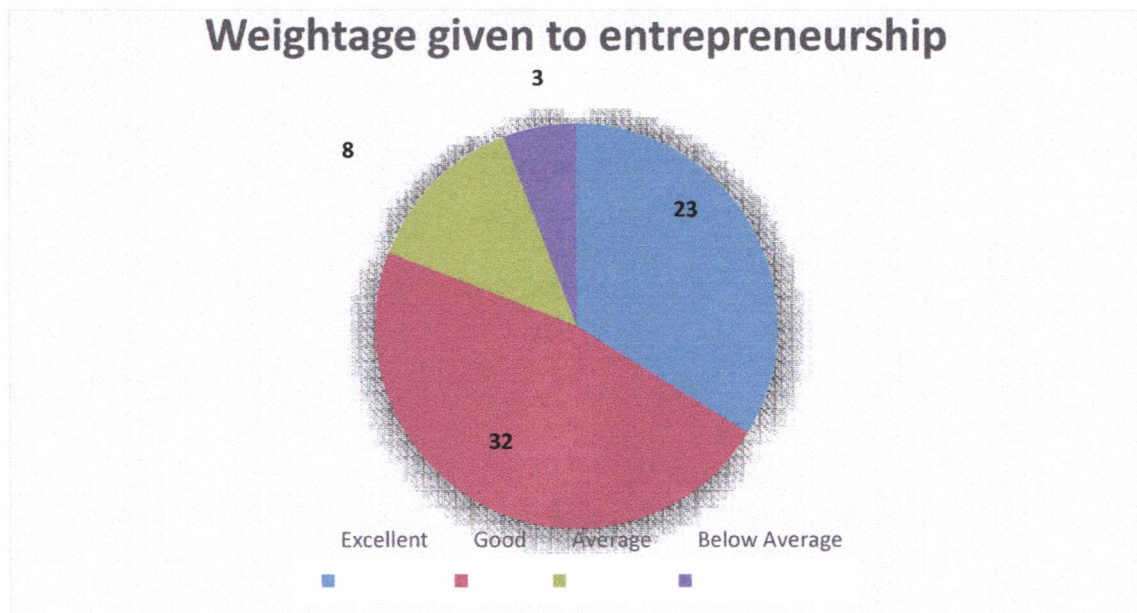




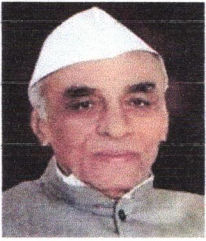
**5. Weightage given to skill development**  
Responses: 66



**6. Weightage given to entrepreneurship**  
Responses: 66

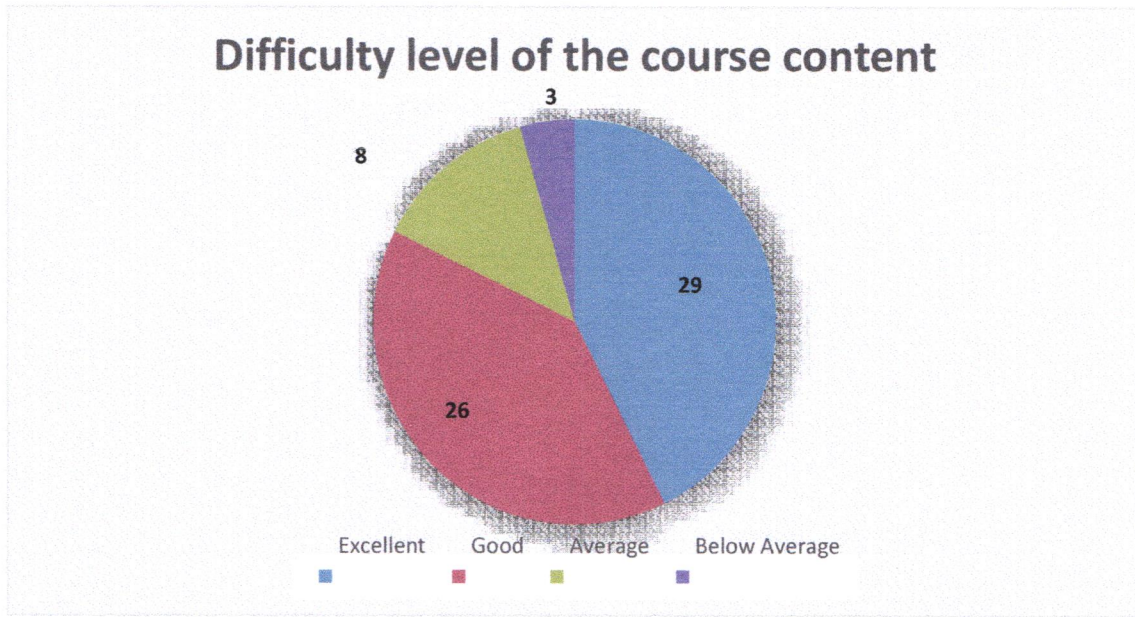






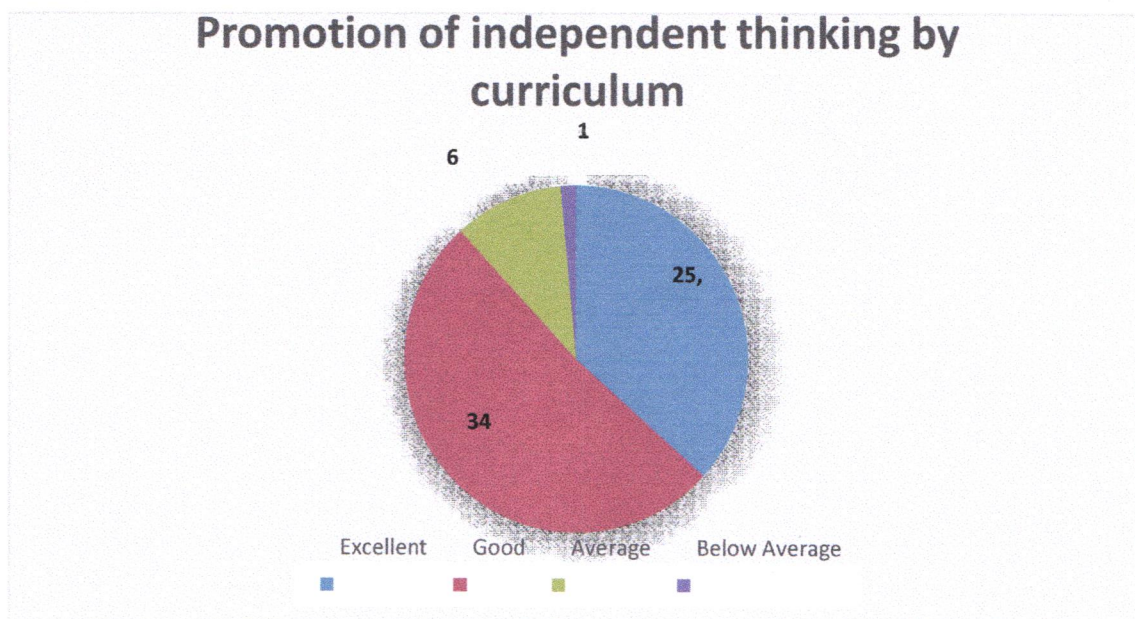
**7. Difficulty level of the course content**

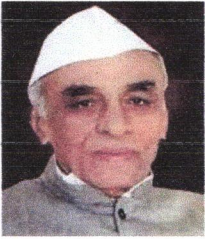
Responses: 66



**8. Promotion of independent thinking by curriculum**

Responses: 66



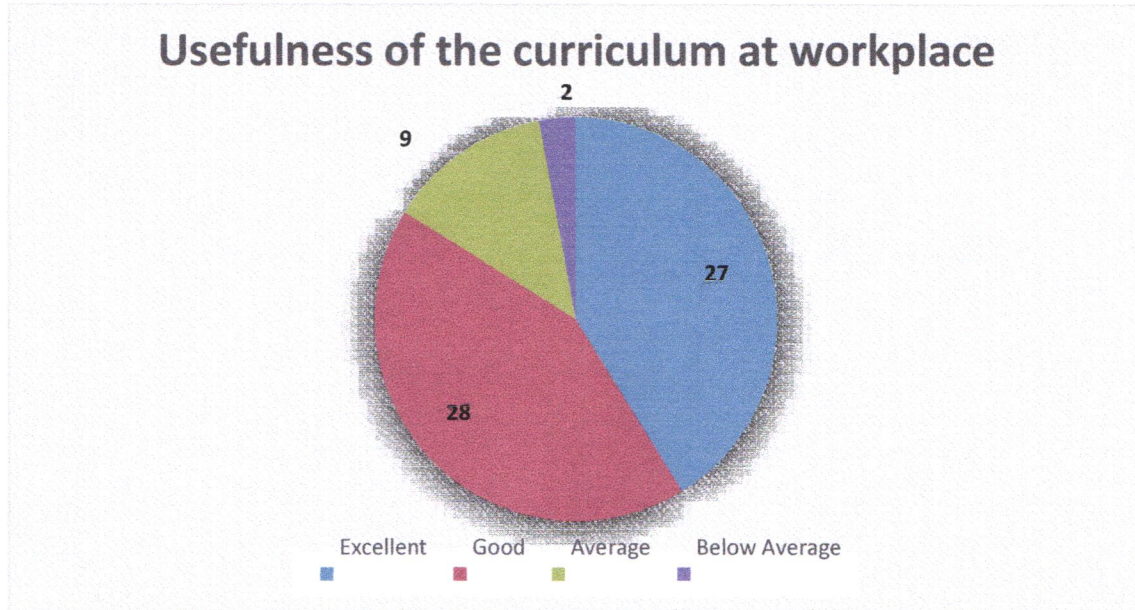


M.S.P.Mandal's  
**SUNDERRAO SOLANKE MAHAVIDYALAYA**  
MAJALGAON, DIST.BEED (MH)-431131  
NAAC Re-Accredited "A" Grade  
**Feedback Analysis**



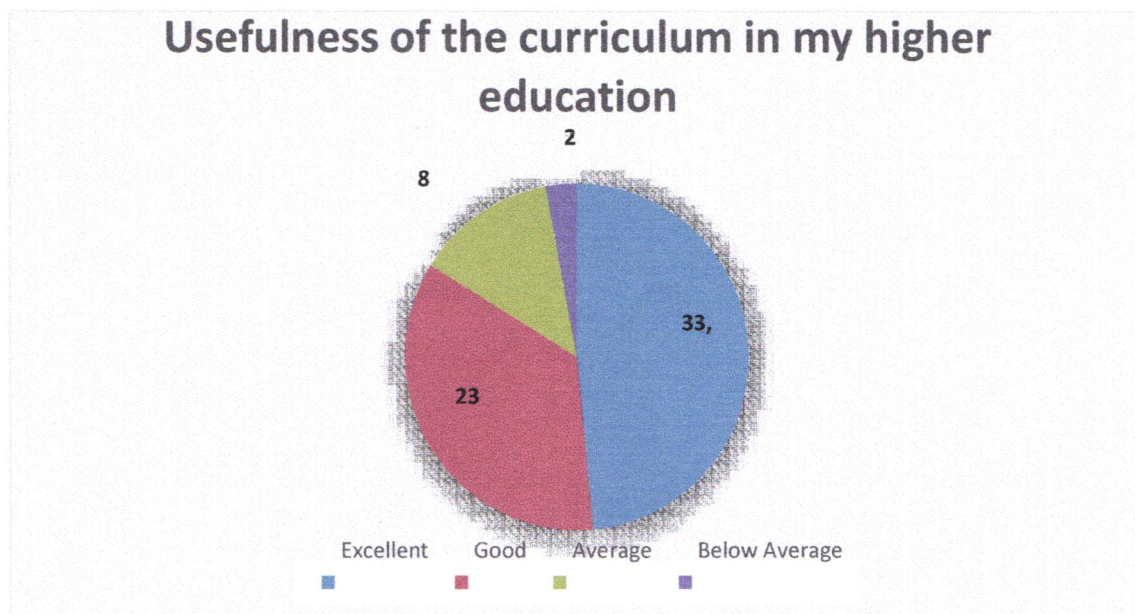
**9. Usefulness of the curriculum at workplace**

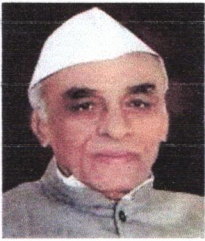
Responses: 66



**10. Usefulness of the curriculum in my higher education**

Responses: 66

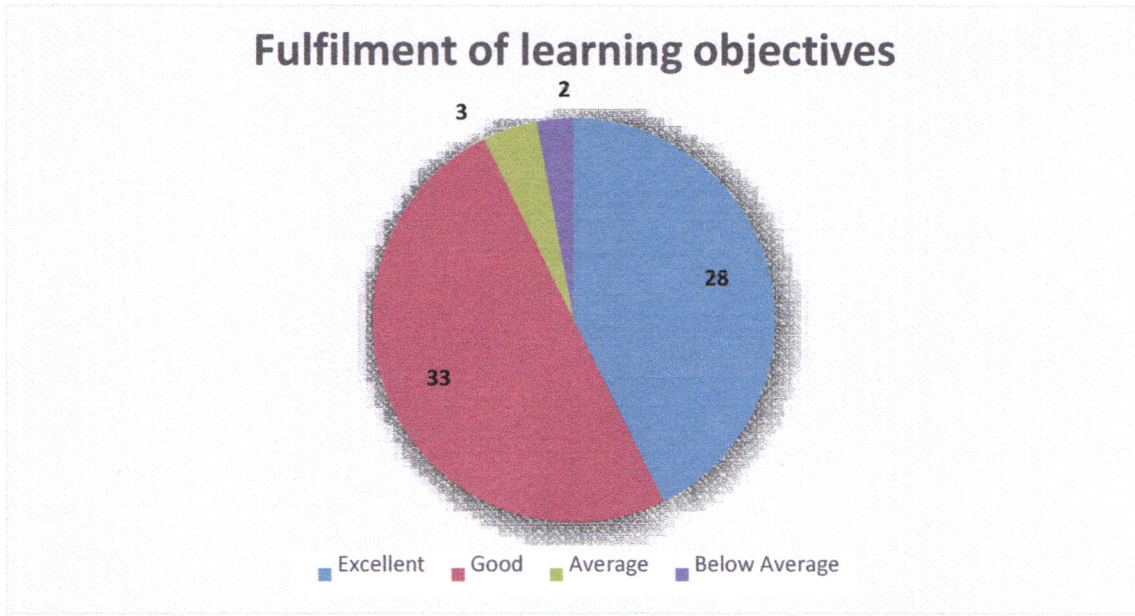




## Feedback Analysis

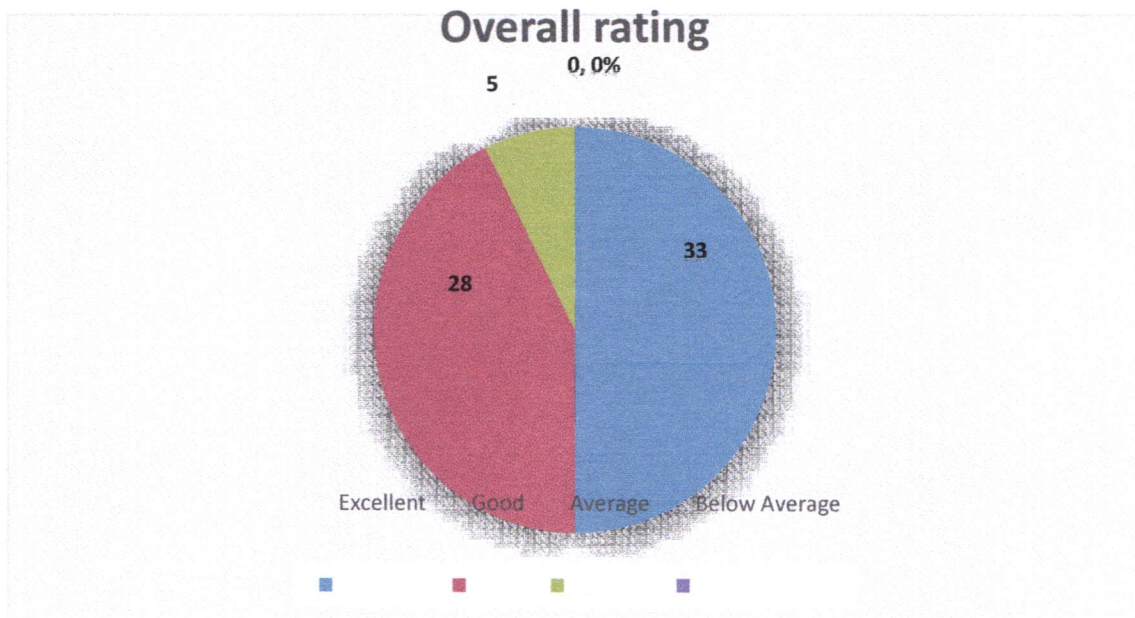
### 11. Fulfilment of learning objectives

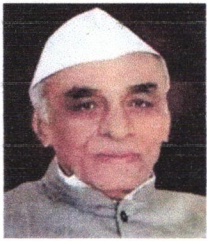
Responses: 66



### 12. Overall rating

Responses: 66





M.S.P.Mandal's  
**SUNDERRAO SOLANKE MAHAVIDYALAYA**  
MAJALGAON, DIST.BEED (MH)-431131  
NAAC Re-Accredited "A" Grade  
**Feedback Analysis**



## Respondents Details:

### A. Applicability of the syllabus to local developmental needs

From the total 66 Alumni respondents, maximum 32 respondents rated as excellent in respect of fulfilment of my learning needs followed, by 30 respondent, rated it as good

### B. Applicability of the curriculum to real life situations

It is found that the maximum 28 of Alumni respondent opined that the Applicability of the curriculum to real life situations was excellent, 31 thinks as good, 6 replied as it is average.

### C. Clarity about the course objectives

The 31 respondents from the total Alumni noted that clarity about the course objectives in curriculum found excellent; followed by 26 remarked as good.

### D. Weightage given to employability

From the total 66 respondents, 26 of respondents opined that the Weighted given to employability found excellent and 33 opined it is good.

### E. Weightage given to skill development

It is found that the 30 number of Alumni opined that the Weightage given to skill development is found excellent. 31 Alumni think in this case as good.

### F. Weightage given to entrepreneurship

The collected information indicates that the maximum number of respondents 23 found the Weightage given to entrepreneurship, followed by 32 says it is good.

### G. Difficulty level of the course content

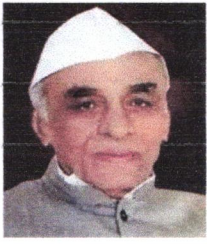
From the total 66 respondents, 29 Alumni rated the Difficulty level of the course content is found excellent and majority of 26 respondents rated to Difficulty level of the course content is as good, 8 respondents says it is average.

### H. Promotion of independent thinking by curriculum

It is observed that 25 of the Alumni feel that Promotion of independent thinking by curriculum is excellent, followed by majority 34 of them opined as good, 6 respondents says it is average.

### I. Usefulness of the curriculum at workplace

From the total 66 Alumni respondents, highest 27 of the respondents opined that Usefulness of the



M.S.P.Mandal's  
**SUNDERRAO SOLANKE MAHAVIDYALAYA**  
MAJALGAON, DIST.BEED (MH)-431131  
NAAC Re-Accredited "A" Grade



## Feedback Analysis

curriculum at workplace found excellent. 28 respondents of them opined as good.

### J. Usefulness of the curriculum in my higher education

From the total 66 Alumni respondents, 33 opined that the Usefulness of the curriculum in my higher education is found excellent, followed by majority 23 of them opined as good, thinks that it is Average.

### K. Fulfilment of learning objectives

It is found that 28 of Alumni feels that Quality and clarity of textual/study/ reference material suggested opined as excellent, followed by majority 33 of them opined as it is good.

### L. Overall rating

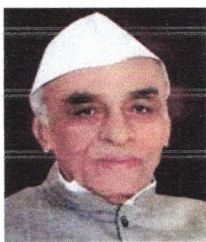
It is found that maximum 33 of Alumni rated to excellent, followed by 28 think it is good.

### Conclusion:

The consolidated feedback report of Alumni is shared with the all HOD's / Coordinators / Officials of different departments for further appropriate action and decision making in this respect.

**IQAC Coordinator**

**Principal**



M.S.P.Mandal's  
**SUNDERRAO SOLANKE MAHAVIDYALAYA**

MAJALGAON, DIST.BEED (MH)-431131

NAAC Re-Accredited "A" Grade



## Feedback Analysis

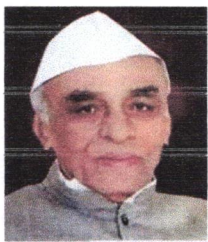
### A REPORT ON THE STUDENT FEEDBACK ON CURRICULUM

ACADEMIC YEAR 2023 – 2024

Online feedback on curriculum collected from the students for the academic year 2023-2024 on various important aspects which include:

1. Fulfilment of my learning needs
2. Applicability of the curriculum to real life situations
3. Clarity about the course objectives
4. Weightage given to employability
5. Weightage given to skill development
6. Structure of the syllabus
7. Difficulty level of the course content
8. Promotion of independent thinking by curriculum
9. Exposure to new knowledge and practices
10. Weightage to practical /field work
11. Creation of interest to pursue higher education
12. Overall rating

**1470 students participated in the survey consisting of 12 aspects/questions.**



M.S.P.Mandal's  
**SUNDERRAO SOLANKE MAHAVIDYALAYA**

MAJALGAON, DIST.BEED (MH)-431131

NAAC Re-Accredited "A" Grade



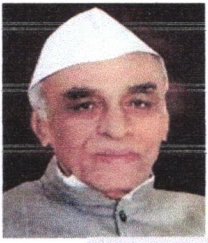
**Feedback Analysis**

**Summary of Feedback**

**STUDENTS FEEDBACK ON CURRICULUM**

**ACADEMIC YEAR 2023 – 2024**

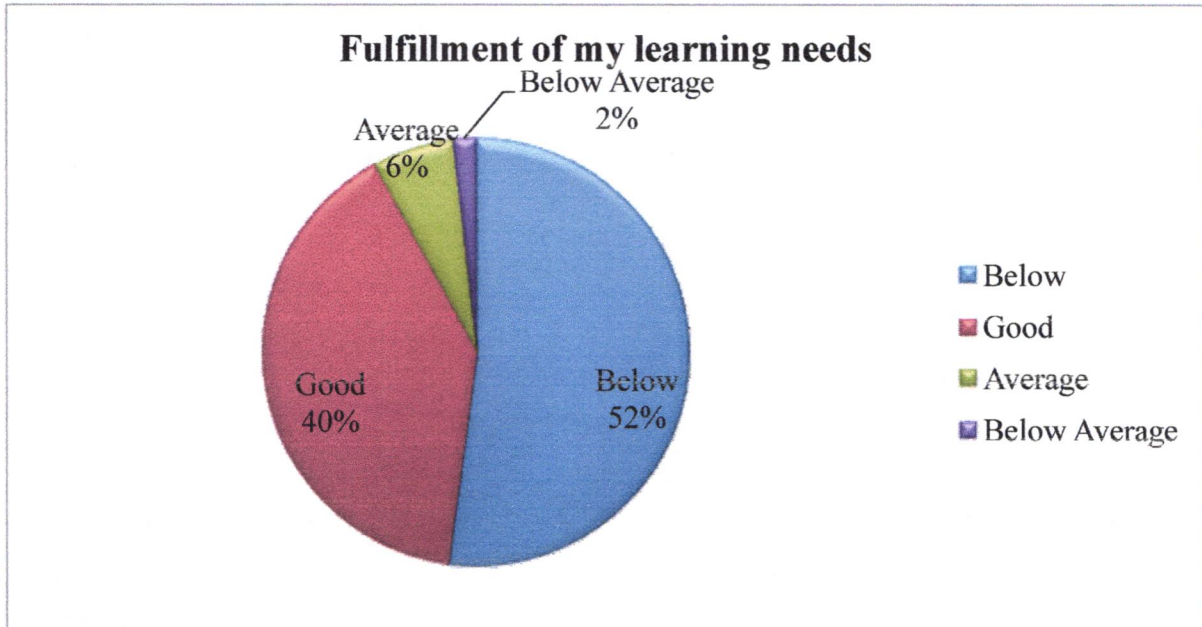
Sr. NO	PARAMETERS	Excellent	Good	Average	Below Average
1	Fulfillment of my learning needs	769	589	92	20
2	Applicability of the curriculum to real life situations	607	650	170	43
3	Clarity about the course objectives	682	553	188	47
4	Weightage given to employability	603	626	183	58
5	Weightage given to skill development	655	598	177	40
6	Structure of the syllabus	649	608	163	50
7	Difficulty level of the course content	609	567	232	62
8	Promotion of independent thinking by curriculum	701	561	176	33
9	Exposure to new knowledge and practices	668	601	164	37
10	Weightage to practical /field work	663	598	169	40
11	Creation of interest to pursue higher education	735	551	154	30
12	Overall Rating	669	598	168	35
	<b>TOTAL</b>	<b>1470</b>			



## Feedback Analysis

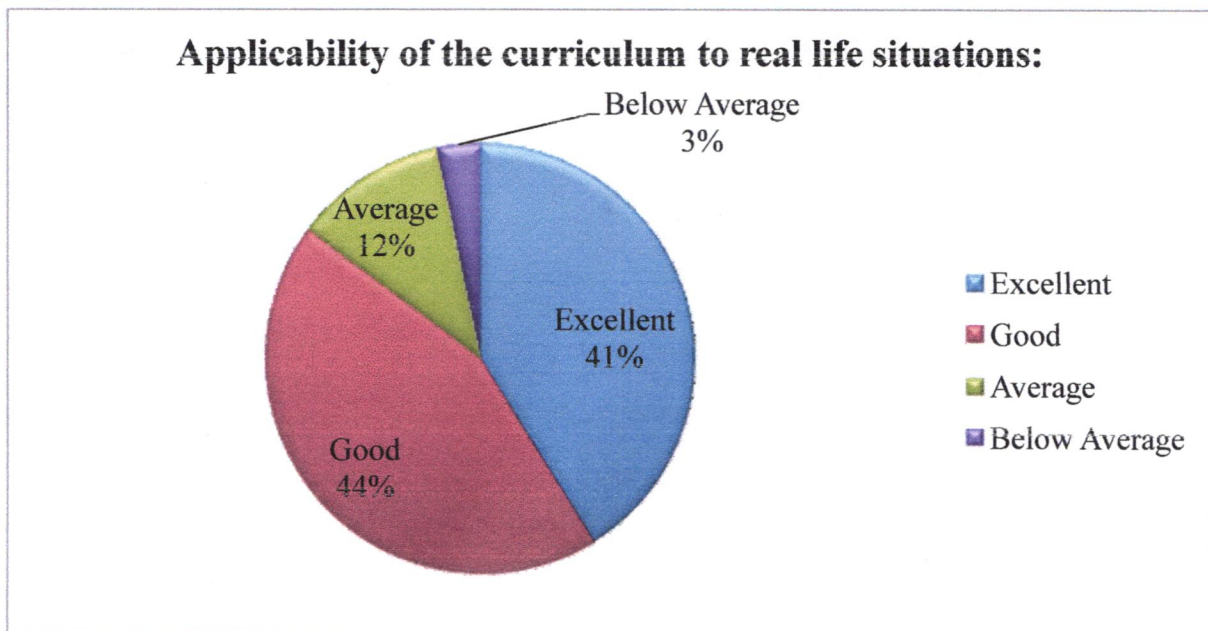
### 1. Fulfillment of my learning needs

Responses: 1470

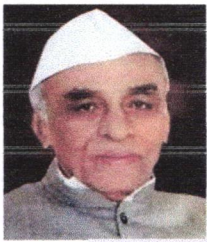


### 2. Applicability of the curriculum to real life situations

Responses: 1470







M.S.P.Mandal's  
**SUNDERRAO SOLANKE MAHAVIDYALAYA**

MAJALGAON, DIST.BEED (MH)-431131

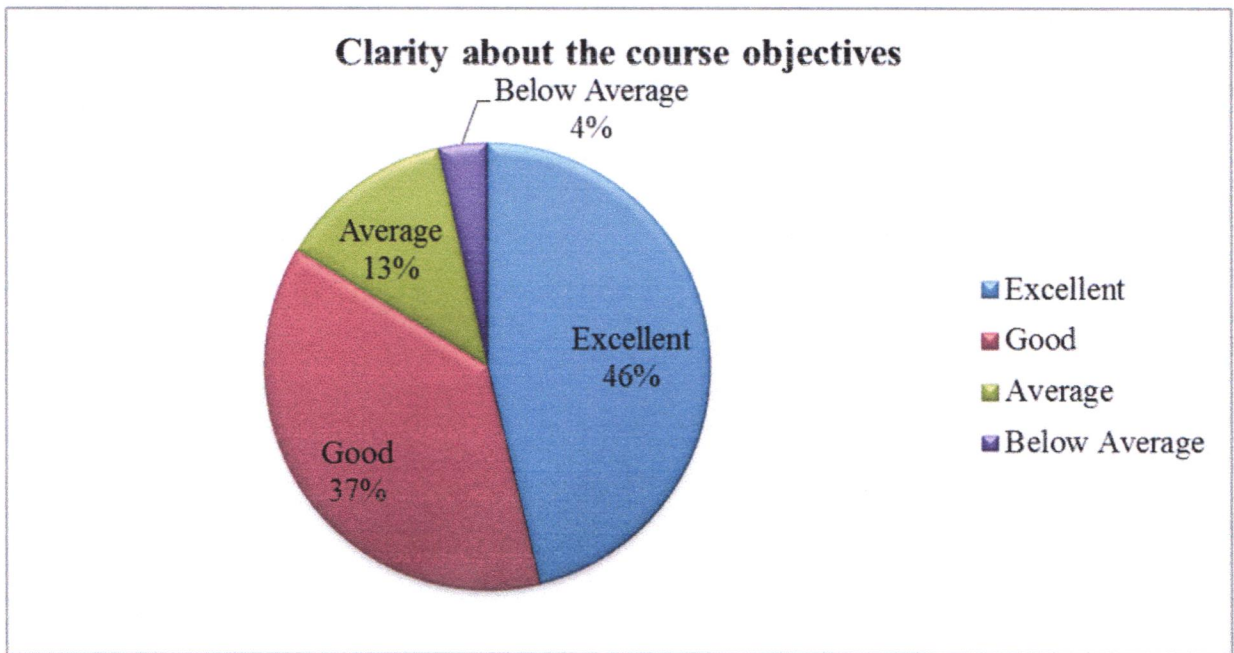
NAAC Re-Accredited "A" Grade



**Feedback Analysis**

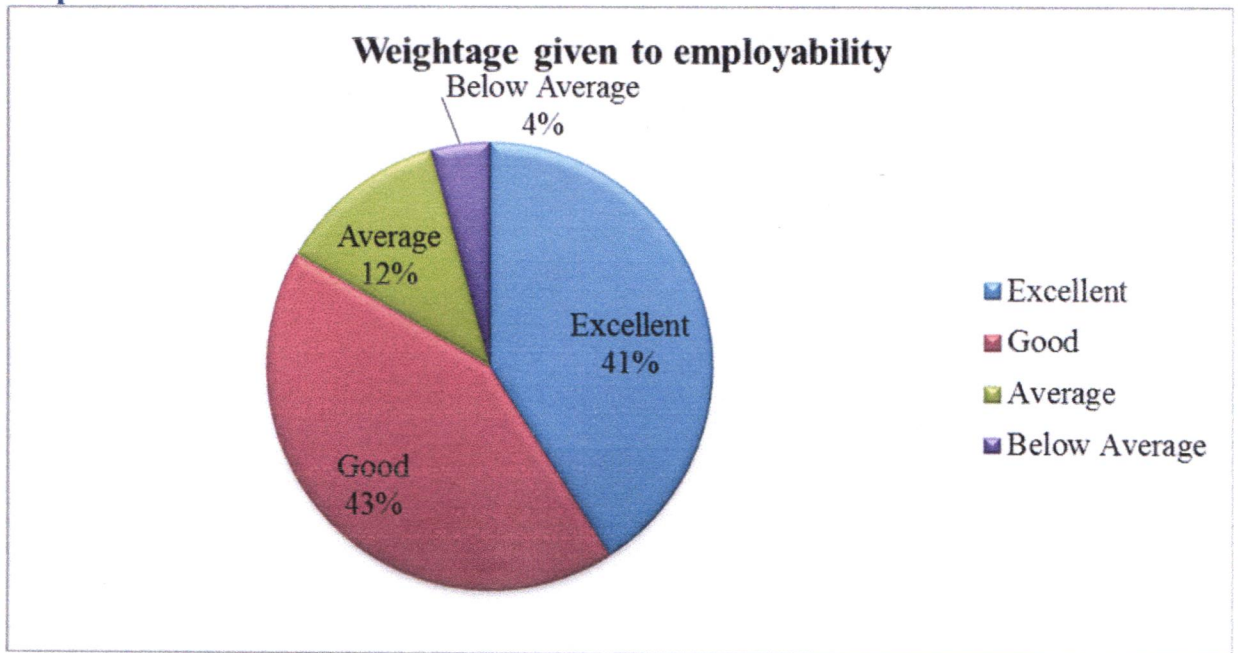
**3. Clarity about the course objectives**

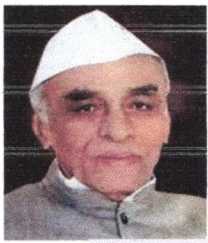
Responses: 1470



**4. Weightage given to employability**

Responses:1470

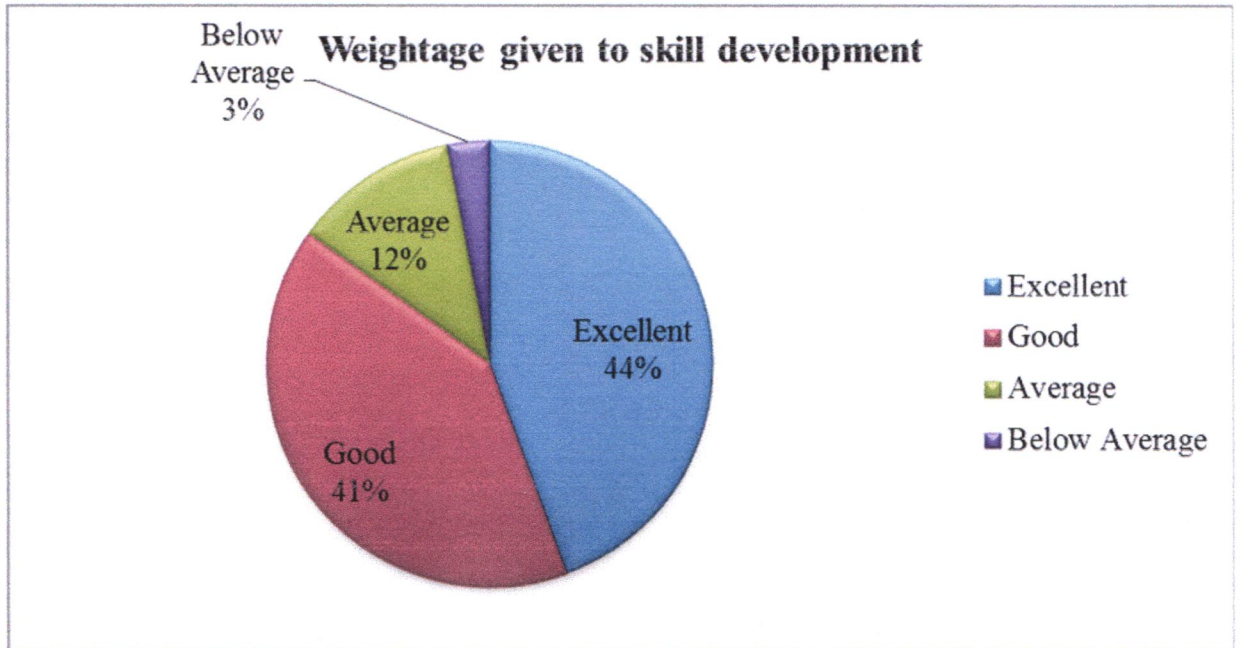




### Feedback Analysis

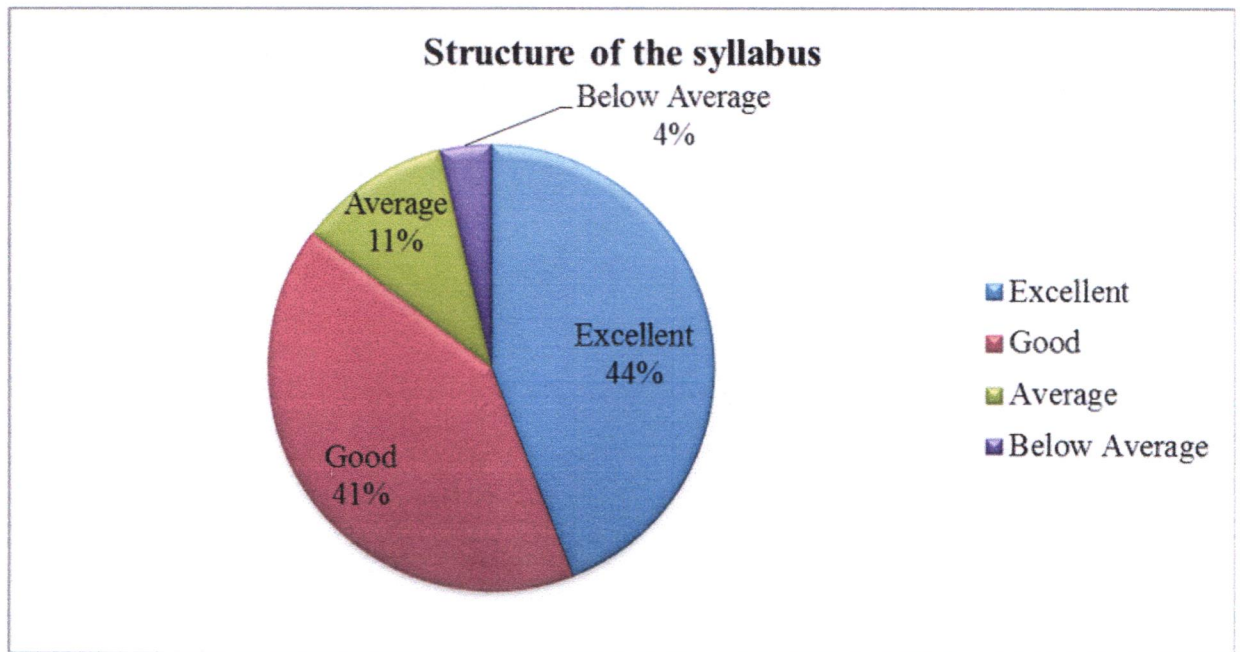
#### 5. Weightage given to skill development

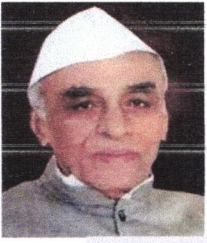
Responses: 1470



#### 6. Structure of the syllabus

Responses: 1470

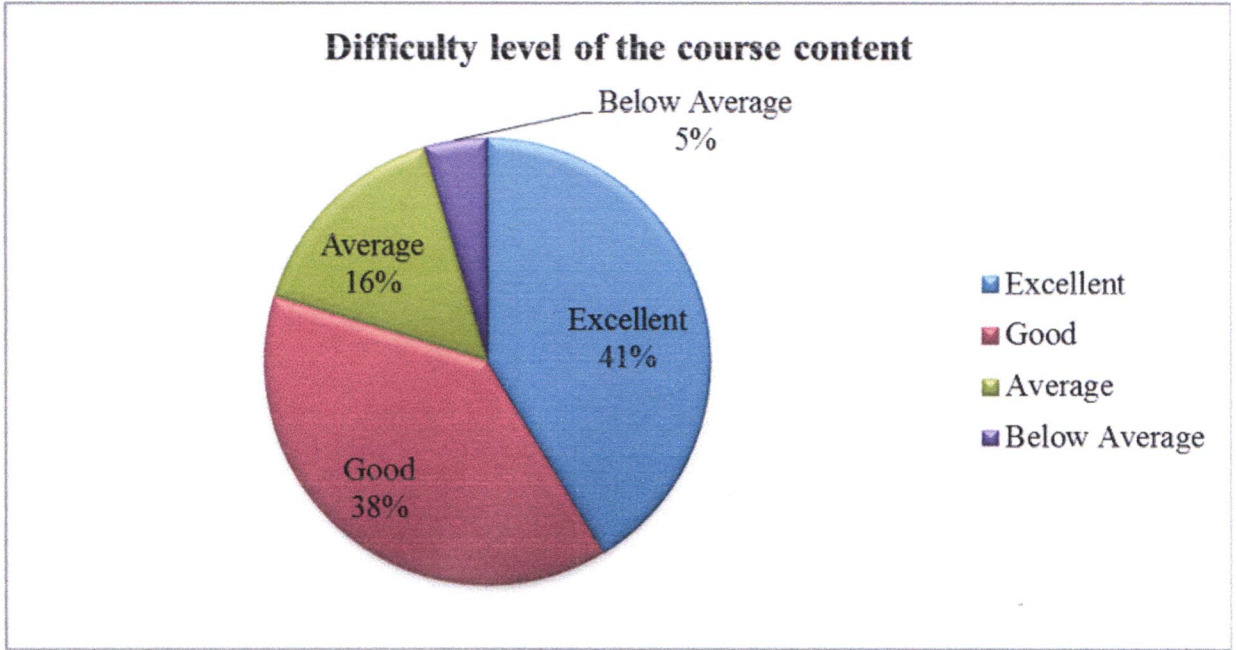




### Feedback Analysis

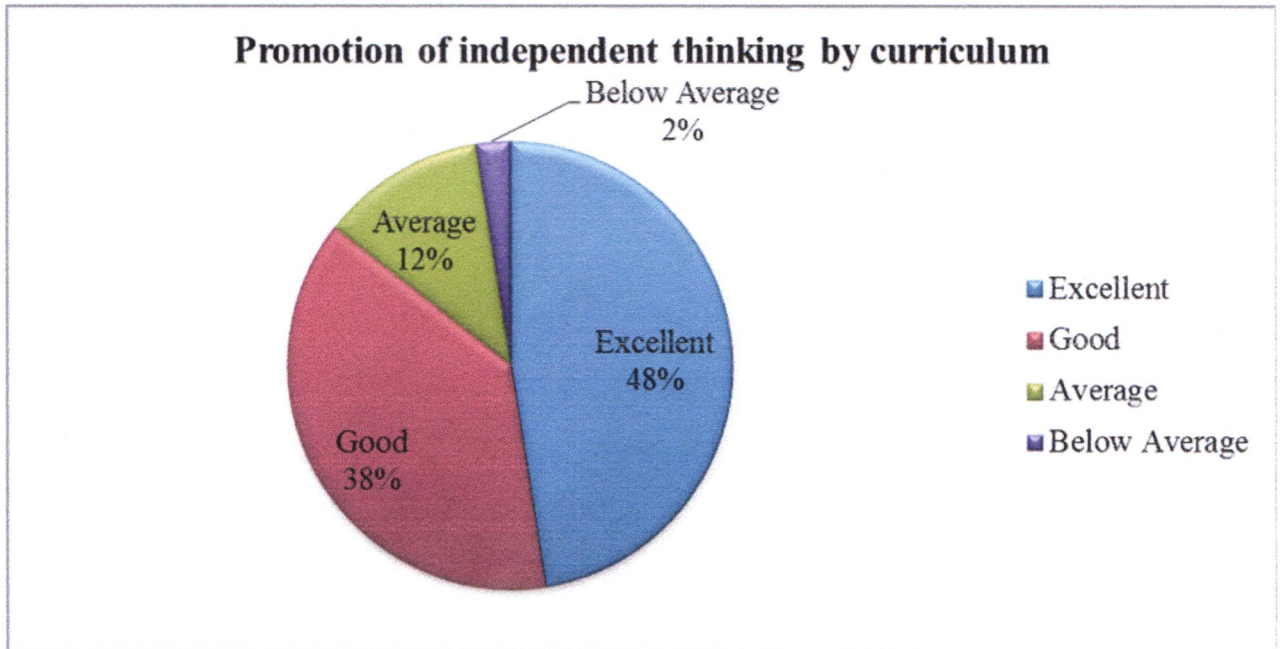
#### 7. Difficulty level of the course content

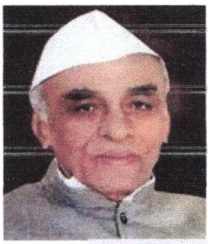
Responses: 1470



#### 8. Promotion of independent thinking by curriculum

Responses: 1470





M.S.P.Mandal's  
**SUNDERRAO SOLANKE MAHAVIDYALAYA**

MAJALGAON, DIST.BEED (MH)-431131

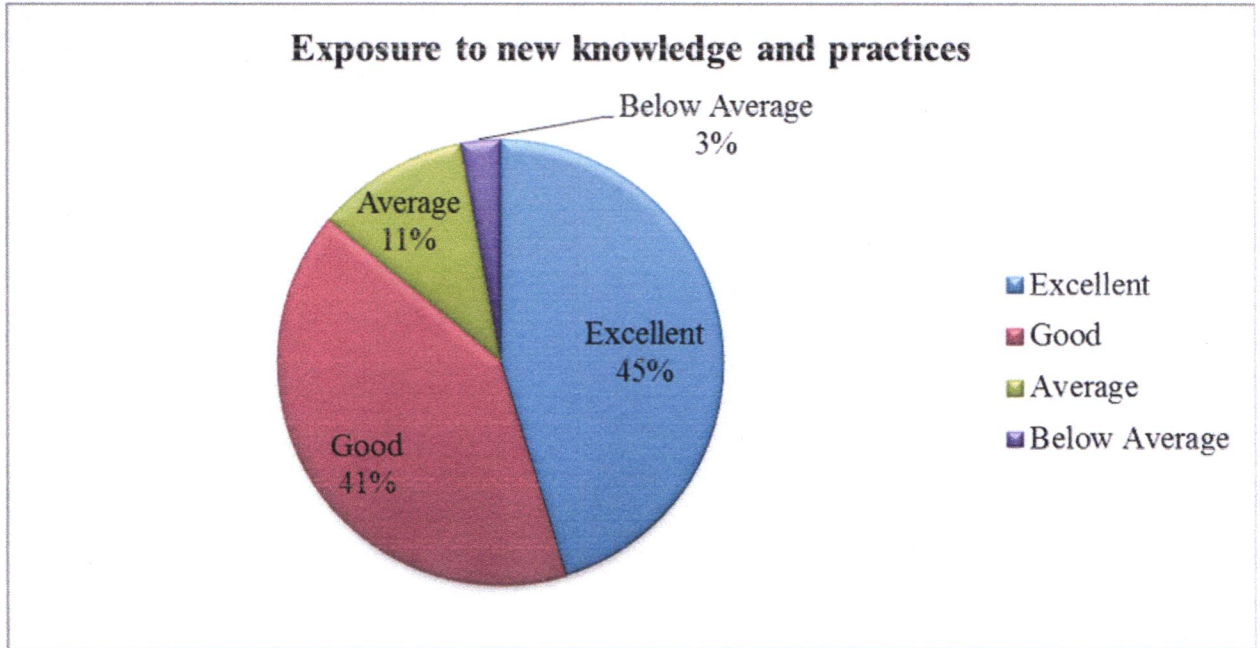
NAAC Re-Accredited "A" Grade



**Feedback Analysis**

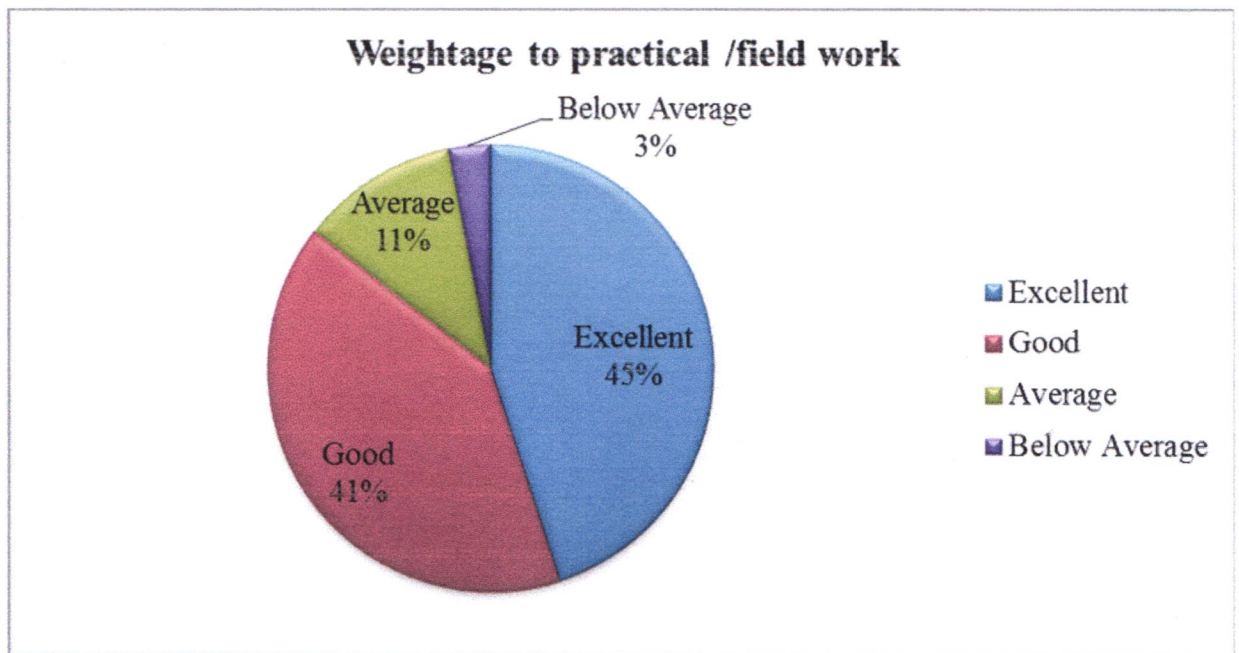
**9. Exposure to new knowledge and practices**

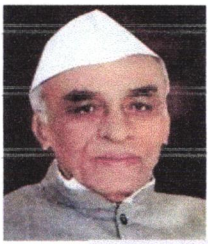
Responses: 1470



**10. Weightage to practical /field work**

Responses: 1475

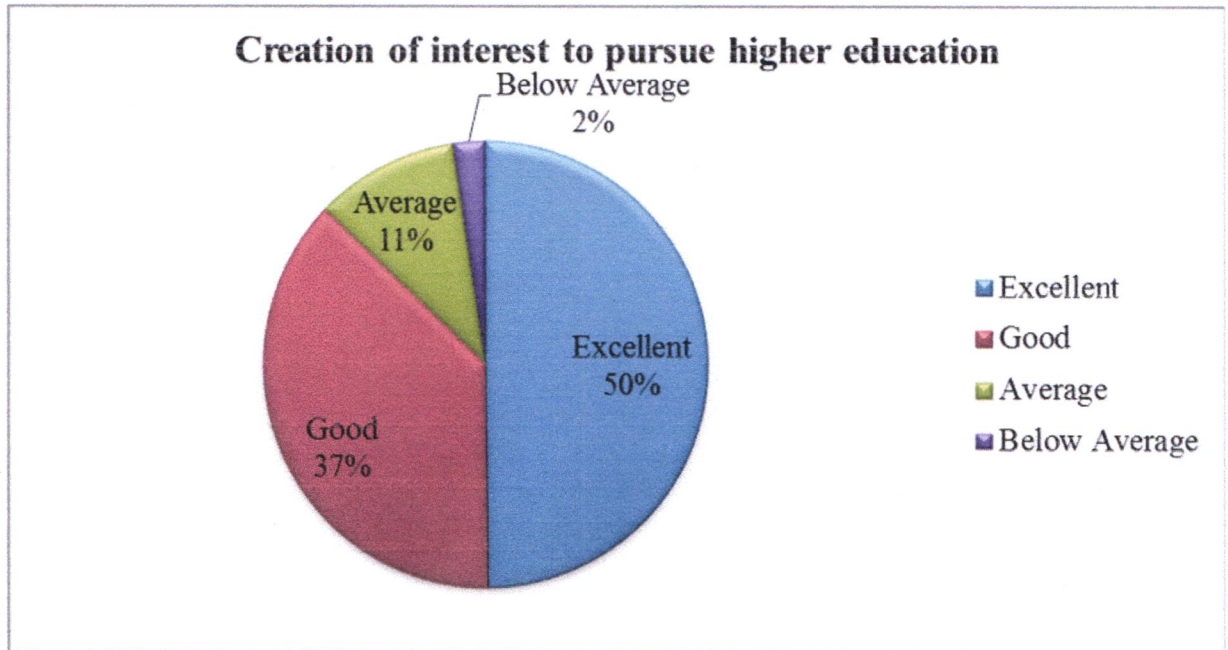




### Feedback Analysis

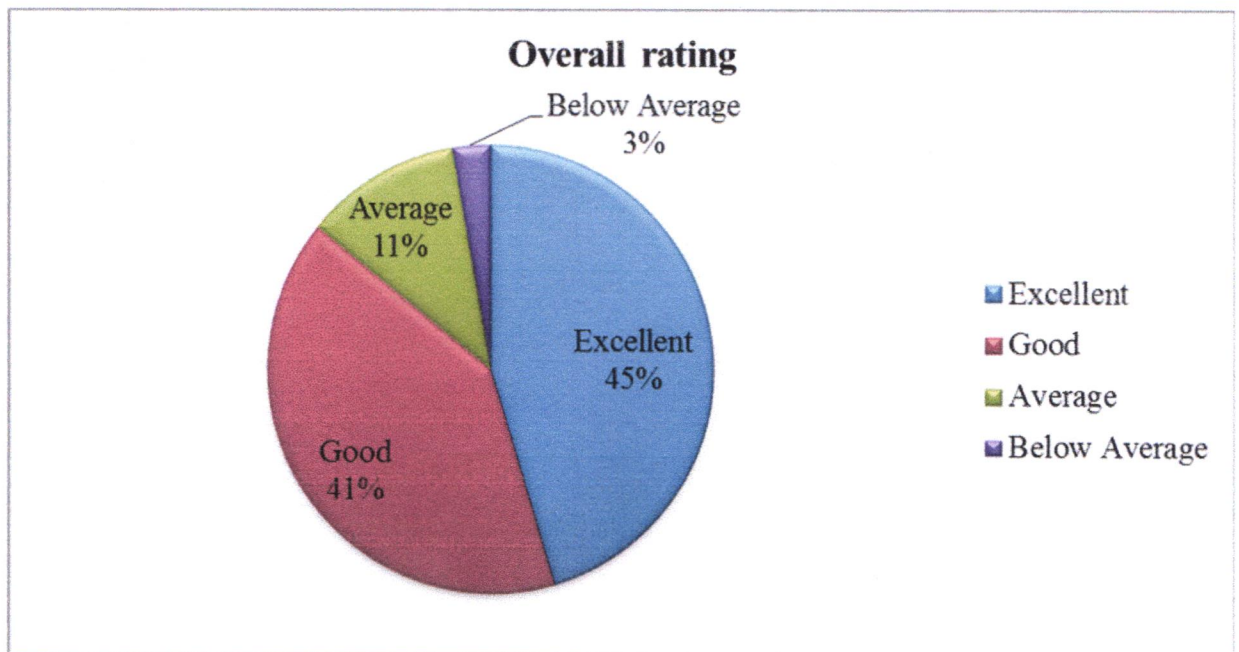
#### 11. Creation of interest to pursue higher education

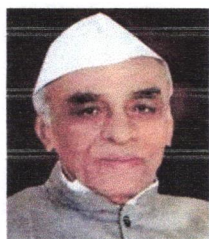
Responses: 1470



#### 12. Overall rating

Responses: 1470





M.S.P.Mandal's  
**SUNDERRAO SOLANKE MAHAVIDYALAYA**

MAJALGAON, DIST.BEED (MH)-431131

NAAC Re-Accredited "A" Grade



## Feedback Analysis

### Respondents Details:

#### A. Fulfillment of My (students) Learning Needs:

From the total 1475 student respondents, maximum (769) respondents rated as excellent in respect of fulfillment of their learning needs by curriculum, followed by 589 respondents, rated it as good, 92 respondents replied as average in this respect and 20 below average.

#### B. Application of the Curriculum to the Real Life Situation:

It is found that the 607 of student's respondent opined that the applicability of the curriculum to the real life situation found excellent, maximum (650) think as good, 170 replied as it is average while 43 mentioned as below average.

#### C. Clarity about the Course Objectives:

The highest (682) respondents from the total students noted that clarity about the course objectives in curriculum found excellent; followed by 553 remarked as good, 188 thinks it is average and 48 noted as below average.

#### D. Weightage Given to Employability:

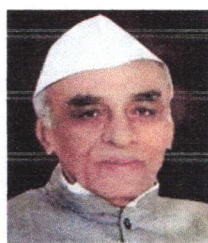
From the total 1475 respondents, 603 of student respondents opined that the Weightage given to employability in curriculum found excellent, 626 opined it is good, 183 rated it is average and 58 as below average.

#### E. Weightage Given to Skill Development:

It is found that the highest (655) number of respondents opined that the Weightage given to skill development in curriculum is found excellent. 598 thinks in this case as good, 177 opined as average, while 40 responded as below average.

#### F. Structure of the Syllabus:

The six aspect of the feedback is concerned with structure of the syllabus. The collected information indicate that the maximum number of respondents (649) found the structure of the syllabus in curriculum is excellent, followed by 608 says it is good, 163 opined as it is



## Feedback Analysis

average and 50 below average.

### I. Difficulty Level of the Course Contents:

From the total 1475 respondents, the maximum number of respondents 609 respondents rated as the difficulty level in the course contents in curriculum taught is found excellent, followed by 567 respondents rated to difficulty level of course content in curriculum is as good, 232 respondents says it is average while 62 responded as below average.

### J. Promotion of independent Thinking by Curriculum:

It is observed that majority (701) of the students feel that promotion of independent thinking through curriculum taught is excellent, followed by 561 of them opined as good, 176 observed it is average. 62 students respondents rated as below average.

### K. Exposure to New Knowledge and Practices:

From the total 1475 student's respondents, highest (668) of the respondents opined that the exposure to new knowledge and practices in curriculum taught found excellent. 601 think as good, 164 observed it is as average and 37 respondents opined as below average.

### L. Weightage to Practical or field work:

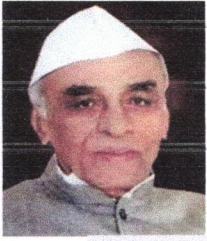
It is observed that the maximum (663) respondents think that Weightage to practical and field work in curriculum is found excellent. The 598 respondents remarked in this respect as good, 169 respondents says Weightage given to practical or field work in curriculum is average, 40 students think as below average.

### M. Creation of Interest to Pursue Higher Education:

From the total 1475 respondents highest (735) opined that the creation of interest to pursue higher education from curriculum is found excellent, followed by 551 thinks that it is good, 154 says it is average while 35 respondents opined below average.

### N. Overall rating:

It is found that maximum 669 students respondent rated to curriculum found excellent, 598 think it is good, 168 rated it as average, 35 students respondent as below average.



M.S.P.Mandal's  
**SUNDERRAO SOLANKE MAHAVIDYALAYA**

MAJALGAON, DIST.BEED (MH)-431131

NAAC Re-Accredited "A" Grade



**Feedback Analysis**

**Conclusion:**

The consolidated feedback report of Alumni is shared with the all HOD's / Coordinators / Officials of different departments for further appropriate action and decision making in this respect.

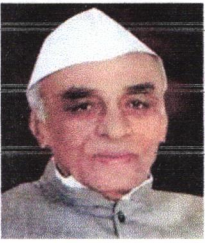
**IQAC Coordinator**  
**Coordinator**

Internal Quality Assurance Cell (IQAC)  
Sunderrao Solanke Mahavidyalaya  
Majalgaon, Dist.Beed (MS)

**Principal**

**PRINCIPAL**  
Sunderrao Solanke Mahavidyalaya  
Majalgaon Dist. Beed (M.S.)





M.S.P.Mandal's  
**SUNDERRAO SOLANKE MAHAVIDYALAYA**

MAJALGAON, DIST.BEED (MH)-431131

NAAC Re-Accredited "A" Grade



**Feedback Analysis**

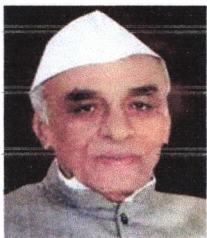
**A REPORT ON THE EMPLOYER FEEDBACK ON  
CURRICULUM**

**ACADEMIC YEAR 2023 – 2024**

Online feedback on curriculum collected from the employer for the academic year 2023-2024 on various important aspects which include:

1. Weightage given to Employability / Skill development
2. Fulfilment of demands at Our work place
3. Inclusion of Course content suitable to my Industry
4. Relevance to Current Knowledge and information
5. Depth of the Course Content
6. Communication / Presentation Skill Development
7. Promotion to Independent thinking
8. Incorporation of Components of Managerial / Leadership abilities
9. Promotion of development of human resources
10. Importance given to learning values
11. Overall rating

**07 employers participated in the survey consisting of 11 aspects/questions.**



M.S.P.Mandal's  
**SUNDERRAO SOLANKE MAHAVIDYALAYA**

MAJALGAON, DIST.BEED (MH)-431131

NAAC Re-Accredited "A" Grade



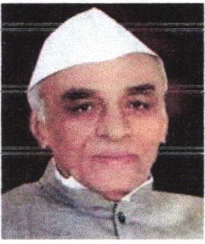
**Feedback Analysis**

**Summary of Feedback**

**EMPLOYERS FEEDBACK ON CURRICULUM**

**ACADEMIC YEAR 2023 – 2024**

Sr. NO.	PARAMETERS	Excellent	Good	Average	Below Average
1	Weightage given to Employability / Skill development	6	1	0	0
2	Fulfilment of demands at Our work place	4	2	1	0
3	Inclusion of Course content suitable to my Industry	3	4	0	0
4	Relevance to Current Knowledge and information	3	4	0	0
5	Depth of the Course Content	2	5	0	0
6	Communication / Presentation Skill Development	4	3	0	0
7	Promotion to Independent thinking	4	2	1	0
8	Incorporation of Components of Managerial / Leadership abilities	2	5	0	0
9	Promotion of development of human resources	4	3	0	0
10	Importance given to learning values	4	3	0	0
11	Overall rating	4	3	0	0



M.S.P.Mandal's  
**SUNDERRAO SOLANKE MAHAVIDYALAYA**

MAJALGAON, DIST.BEED (MH)-431131

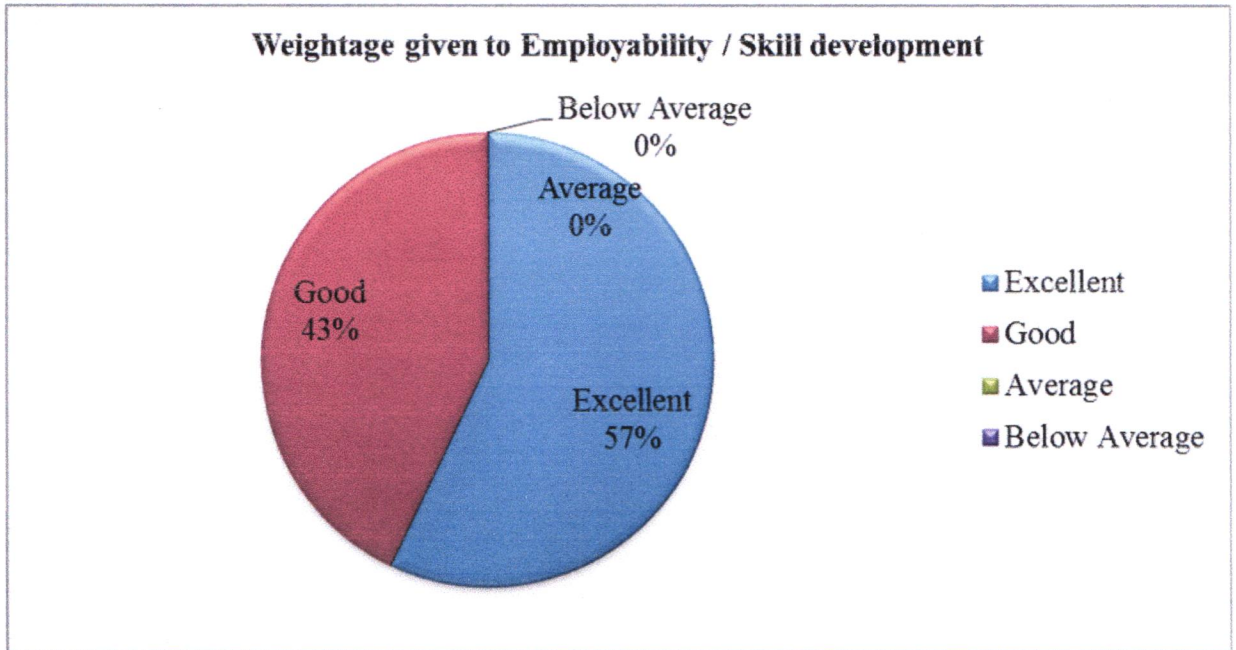
NAAC Re-Accredited "A" Grade



**Feedback Analysis**

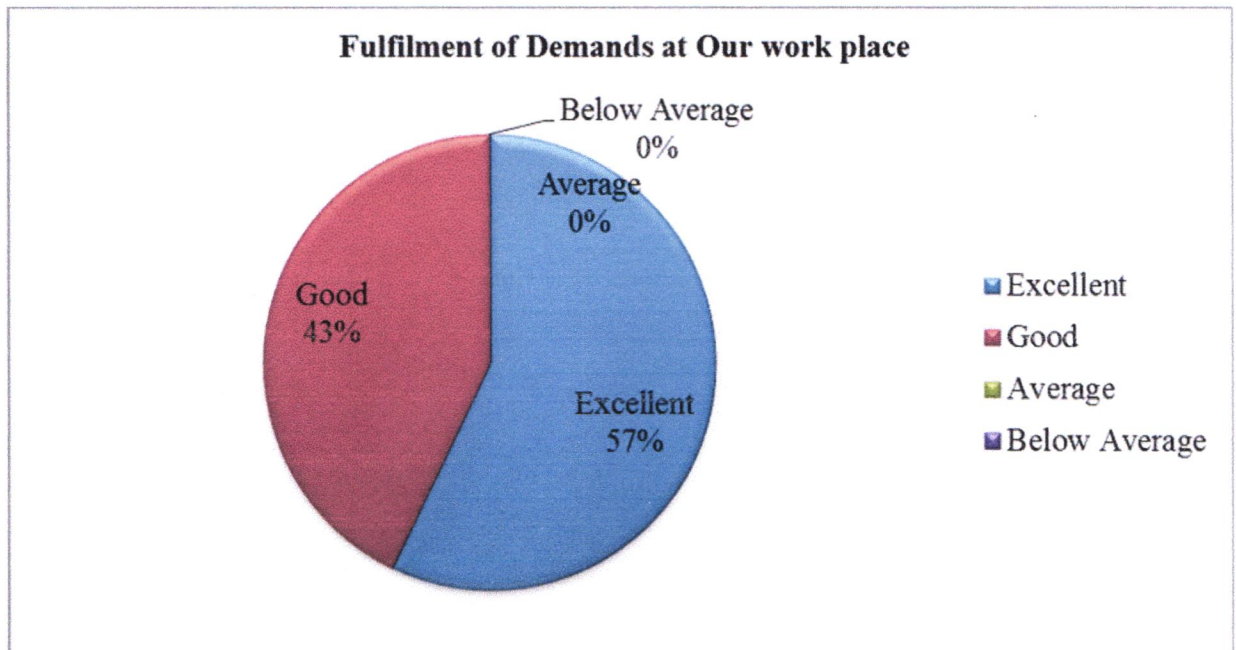
**1. Weightage given to Employability / Skill development**

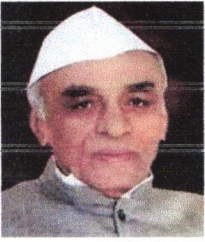
Responses: 07



**2. Fulfilment of Demands at Our work place**

Responses: 07





M.S.P.Mandal's  
**SUNDERRAO SOLANKE MAHAVIDYALAYA**

MAJALGAON, DIST.BEED (MH)-431131

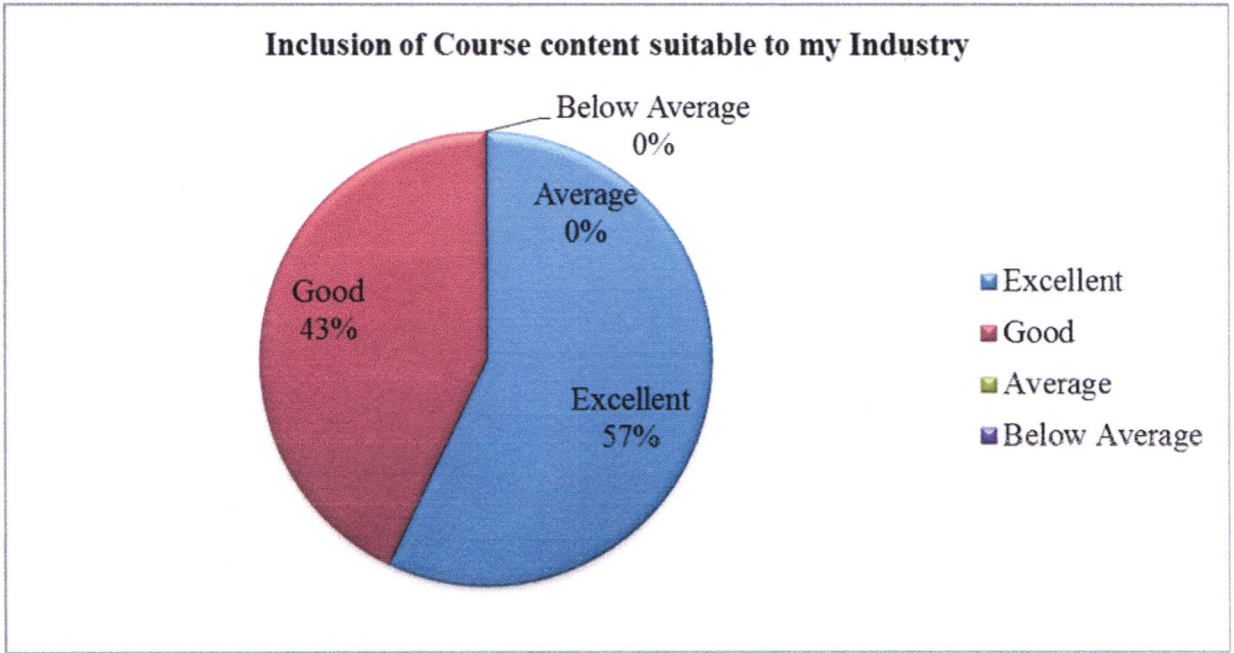
NAAC Re-Accredited "A" Grade



**Feedback Analysis**

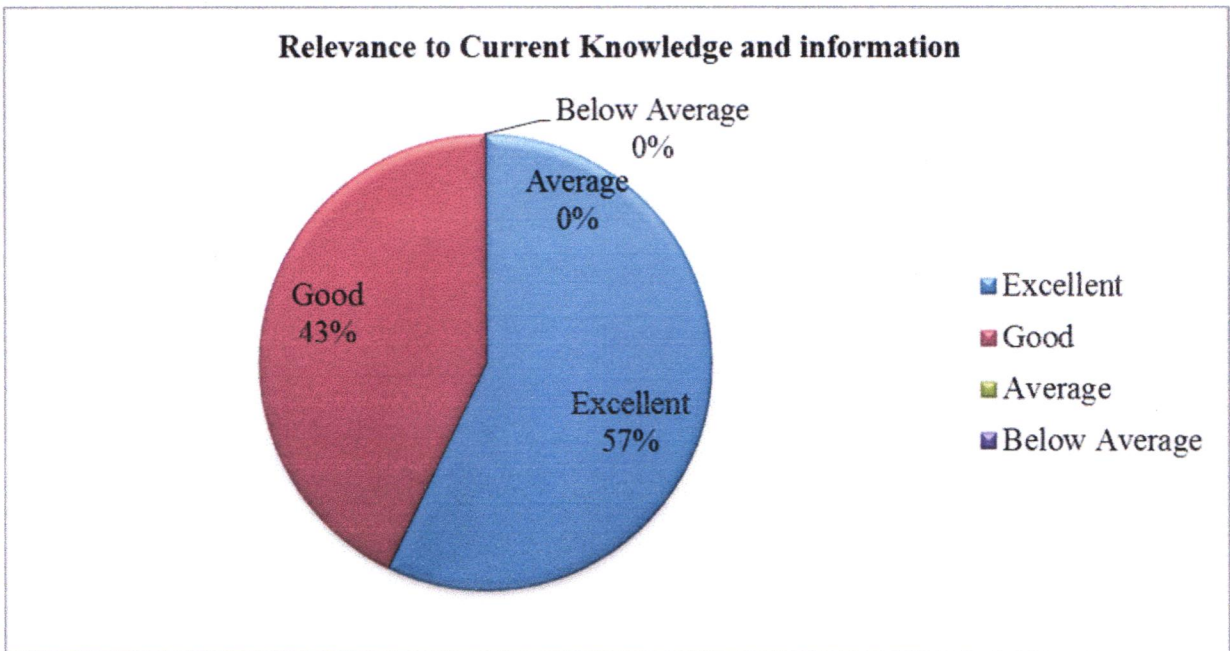
**3. Inclusion of Course content suitable to my Industry**

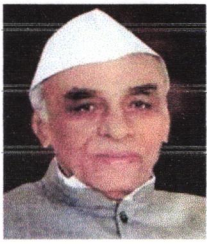
Responses: 07



**4. Relevance to Current Knowledge and information**

Responses: 07





M.S.P.Mandal's  
**SUNDERRAO SOLANKE MAHAVIDYALAYA**

MAJALGAON, DIST.BEED (MH)-431131

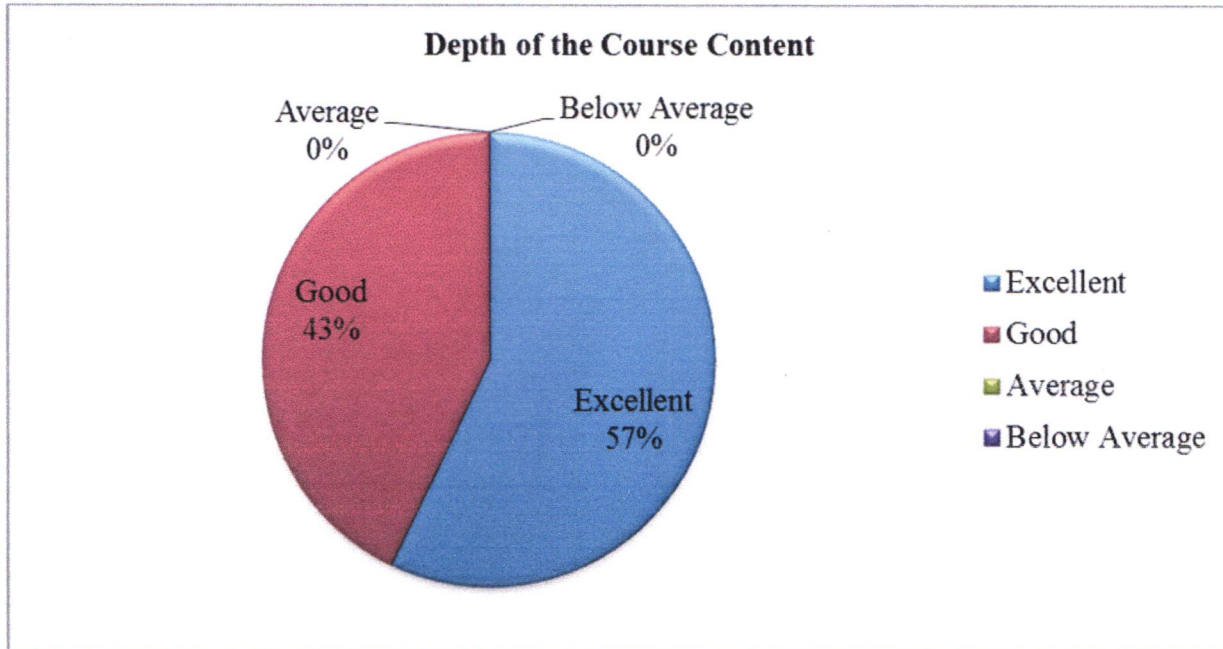
NAAC Re-Accredited "A" Grade



**Feedback Analysis**

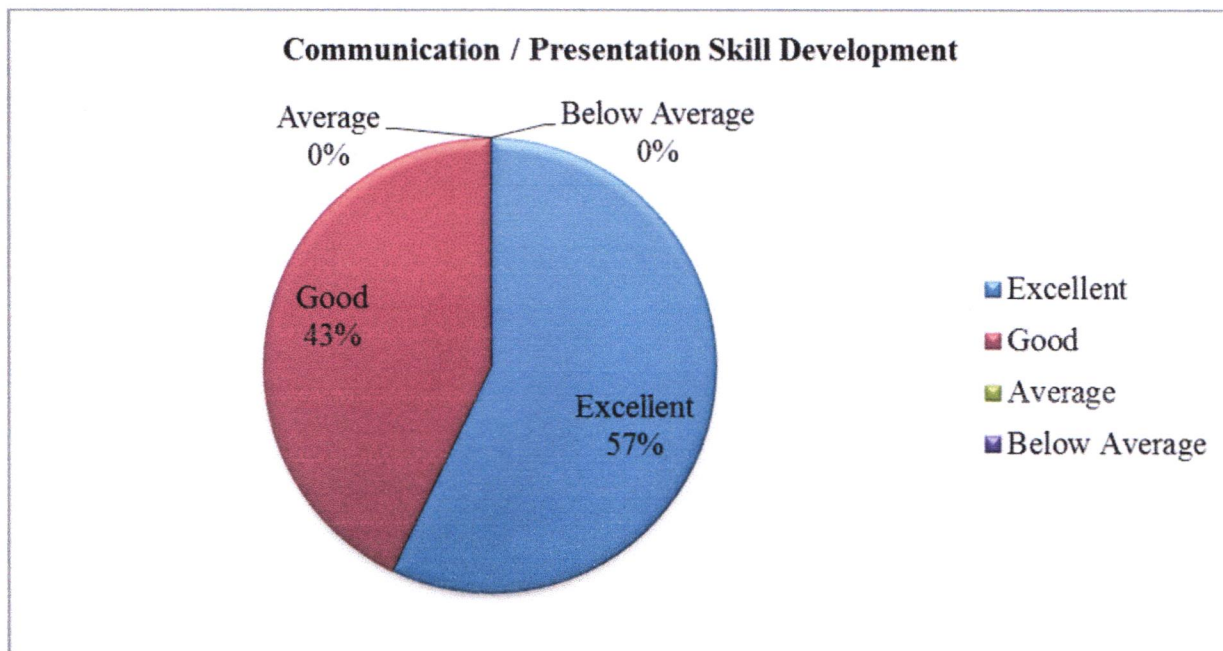
**5. Depth of the Course Content**

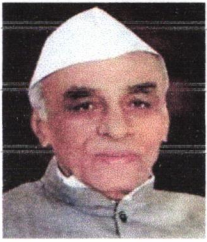
Responses: 07



**6. Communication / Presentation Skill Development**

Responses: 07

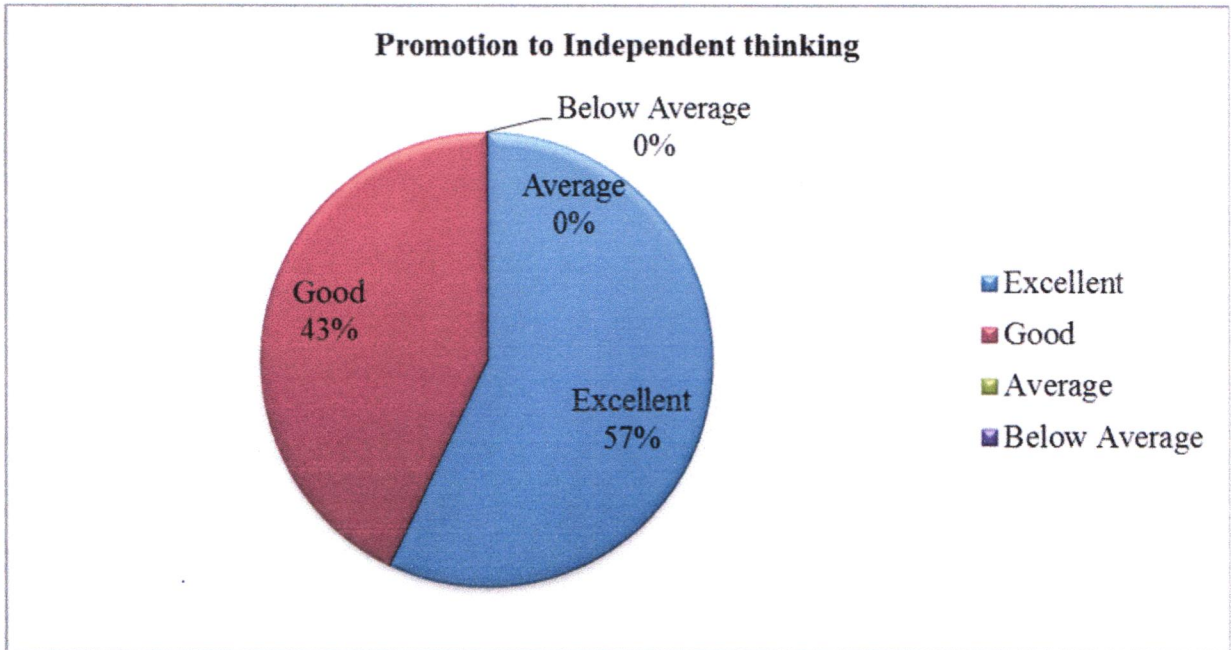




### Feedback Analysis

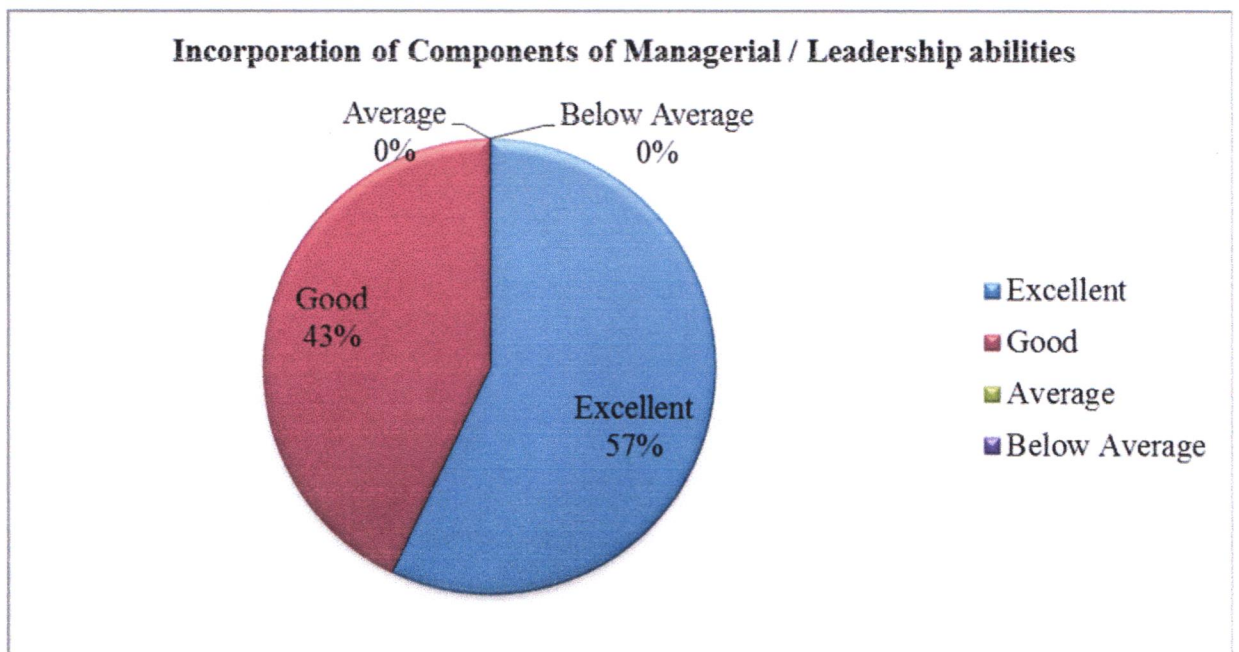
#### 7. Promotion to Independent thinking

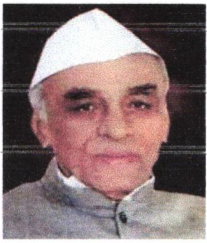
Responses: 07



#### 8. Incorporation of Components of Managerial / Leadership abilities

Responses: 07





M.S.P.Mandal's  
**SUNDERRAO SOLANKE MAHAVIDYALAYA**

MAJALGAON, DIST.BEED (MH)-431131

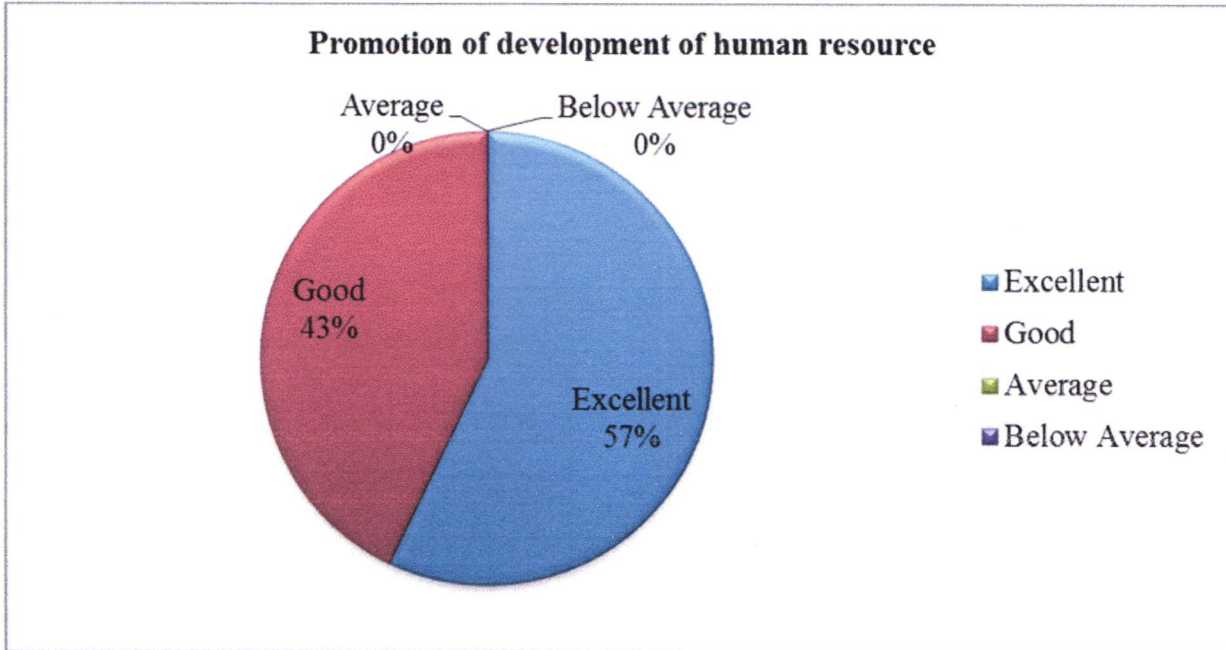
NAAC Re-Accredited "A" Grade



**Feedback Analysis**

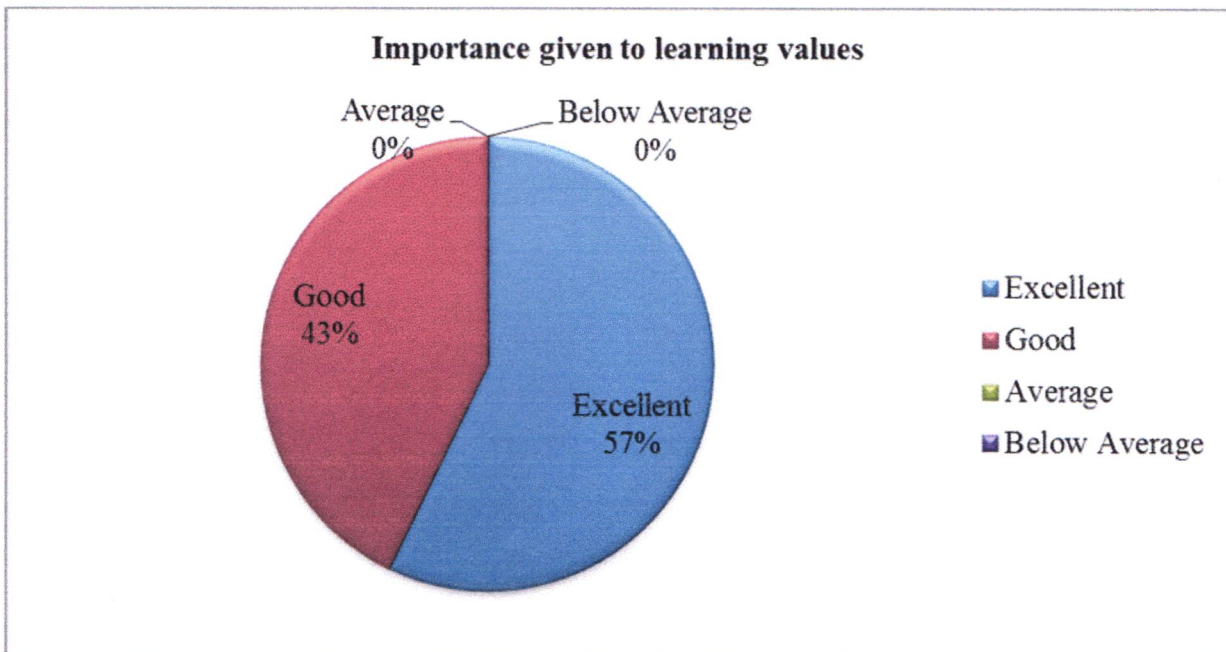
**9. Promotion of development of human resources**

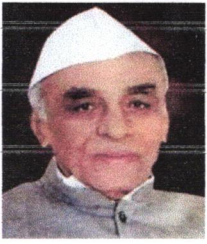
Responses: 07



**10. Importance given to learning values**

Responses: 07

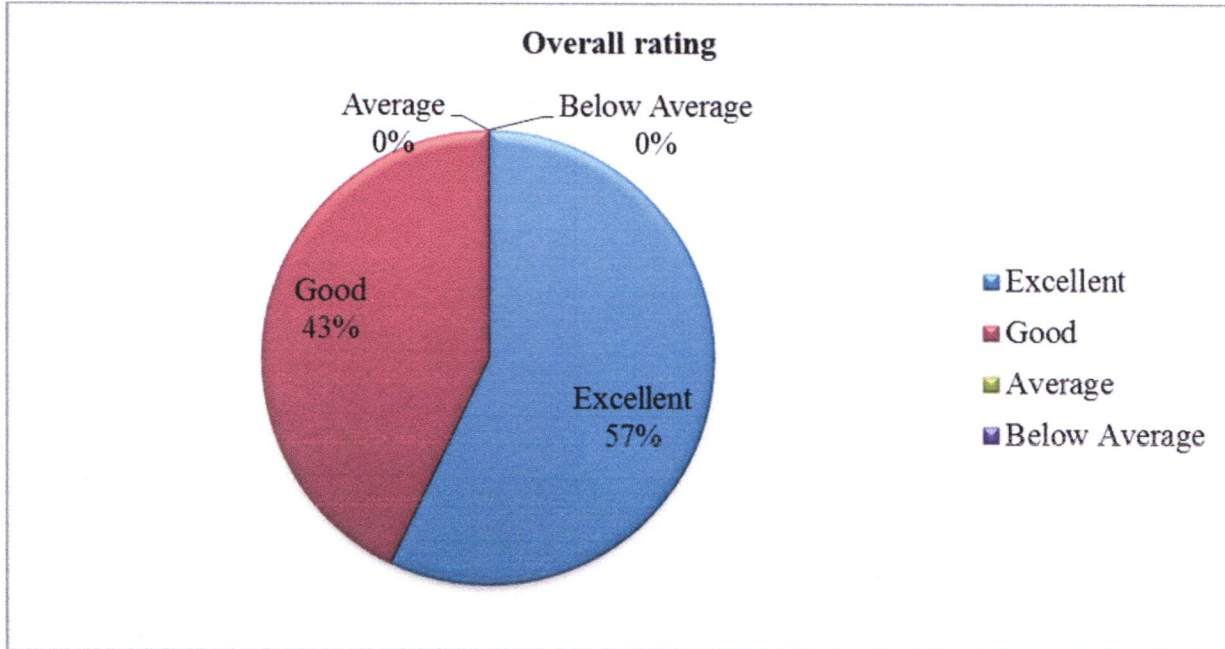




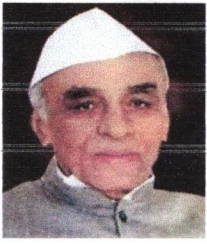
### Feedback Analysis

#### 11. Overall rating

Responses: 07







M.S.P.Mandal's  
**SUNDERRAO SOLANKE MAHAVIDYALAYA**

MAJALGAON, DIST.BEED (MH)-431131

NAAC Re-Accredited "A" Grade



## Feedback Analysis

### Respondents Details:

#### A. Weightage given to Employability / Skill development

From the total 7 employer respondents, maximum 6 respondents rated as excellent in respect of Weightage given to Employability / Skill development followed, by 1 respondent , rated it as good

#### B. Fulfillment of demands at Our work place

It is found that the maximum 4 of employers respondent opined that the Fulfilment of demands at Our work place found excellent, 2 think as good, 1 replied as it is average.

#### C. Inclusion of Course content suitable to my Industry

The 3 respondents from the total employers noted that clarity about the course objectives in curriculum found excellent; followed by 4 remarked as good.

#### D. Relevance to Current Knowledge and information

From the total 7 respondents, 3 of respondents opined that the relevance to Current Knowledge and information found excellent and 4 opined it is good.

#### E. Depth of the Course Content

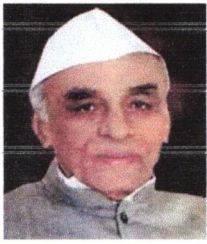
It is found that the 2 number of employers opined that the depth of the Course Content is found excellent. 5 employers thinks in this case as good.

#### F. Communication / Presentation Skill Development

The collected information indicate that the maximum number of respondents (4) found the Communication / Presentation Skill Development excellent, followed by 3 says it is good.

#### G. Promotion to Independent thinking

From the total 7 respondents, the maximum number of respondents,4 respondents rated as the Promotion to Independent thinking is found excellent, followed by 2 respondents rated to Promotion to Independent thinking is as good, 1 respondents says it is average.



M.S.P.Mandal's  
**SUNDERRAO SOLANKE MAHAVIDYALAYA**

MAJALGAON, DIST.BEED (MH)-431131

NAAC Re-Accredited "A" Grade



## Feedback Analysis

### H. Incorporation of Components of Managerial / Leadership abilities

It is observed that 2 of the employers feel that promotion of. Incorporation of Components of Managerial / Leadership abilities is excellent, followed by majority (5) of them opined as good.

### I. Promotion of development of human resources

From the total 7 employer's respondents, highest (4) of the respondents opined that promotion of development of human resources found excellent. 3 think as good.

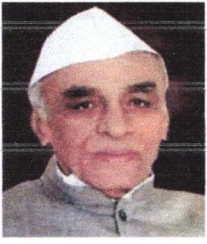
### J. Importance given to learning values

From the total 7 respondents highest (4) opined that the. Importance given to learning values is found excellent, followed by 3 thinks that it is good.

### K. Overall rating

It is found that maximum 4 of employers rated to excellent, 3 think it is good.

**Conclusion:**



M.S.P.Mandal's  
**SUNDERRAO SOLANKE MAHAVIDYALAYA**

MAJALGAON, DIST.BEED (MH)-431131

*NAAC Re-Accredited "A" Grade*

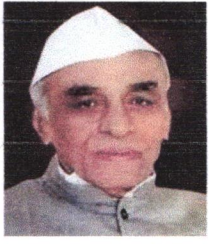


## **Feedback Analysis**

The consolidated feedback report of employers is shared with the all HOD's / Coordinators / Officials of different departments for further appropriate action and decision making in this respect.

**IQAC Coordinator**

**Principal**



M.S.P.Mandal's  
**SUNDERRAO SOLANKE MAHAVIDYALAYA**  
MAJALGAON, DIST.BEED (MH)-431131  
NAAC Re-Accredited "A" Grade



M. S. P. Mandal's  
**Sunderrao Solanke Mahavidyalaya Majalgaon, DIST.BEED (MH)-431131**  
**Internal Quality Assurance Report**  
Feedback on Curriculum  
**ACTION TAKEN REPORT**  
2023-2024

Feedback was collect online for the academic year 2023-2024 in the categories like feedback from students, teachers, alumni and employers. However, looking at the feedback given by stakeholders, the following measures were taken for appreciation and suggesting certain change the curriculum of the university.

To include certain value addition issues it was decided that few value addition course will be commenced. Feedback given by the various stakeholders was found very encouraging for the academic year. It was advised to the all concern to make it more suitable in real li situation to face challenges. To prepare systematic feedback report from each department and send them to t respective BoS for the necessary changes. There is scope in the curriculum of various fields to give exposure to new knowledge.

To prepare systematic feedback report from each department and send them to respective BoS for the necessary changes. There is scope in the curriculum of various fields to give exposure to new knowledge along with practical/field work. It was decided that to communicate with their syllabus framing committees to add it. All feedback was distributed paper wise as well as program wise for co specifications, to the respective departments for necessary action. It was advised to the teachers to give more weightage on learning values like analytical abilities etc. while contributing to the curriculum framework. HoDs were instructed to take feedback from the colleagues in the department compile it systematically. It was decided that the teachers who will contribute in syllabus framing, while suggest textual/ study, reference material in curriculum he should focused on quality material suggest it for references. To meet certain challenges few skill-oriented courses thought to be commenced year 2024-2025.

**Coordinator**  
Internal Quality Assurance Cell (IQAC)  
Sunderrao Solanke Mahavidyalaya,  
Majalgaon, Dist. Beed (MS)

**PRINCIPAL**  
Sunderrao Solanke Mahavidyalaya  
Majalgaon Dist. Beed (M.S.)