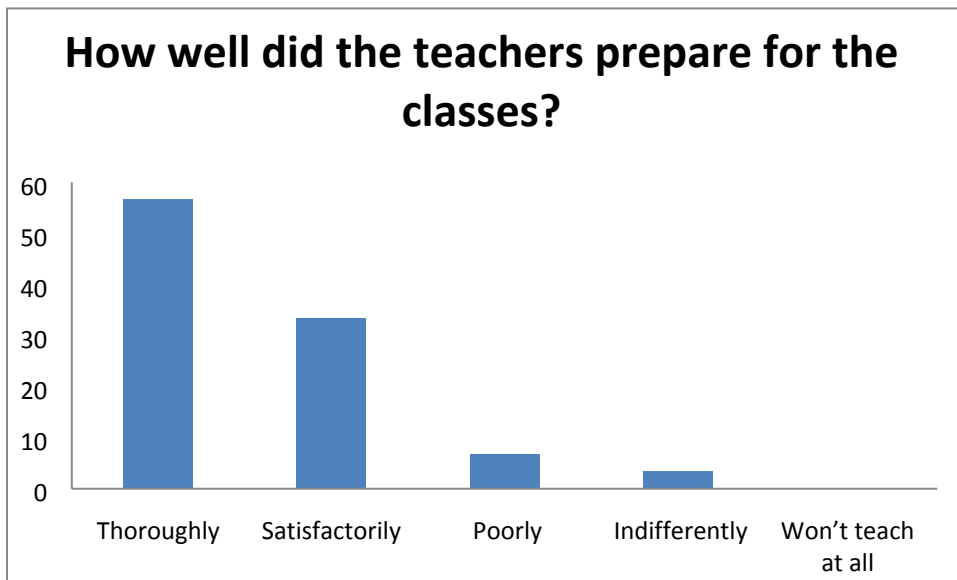
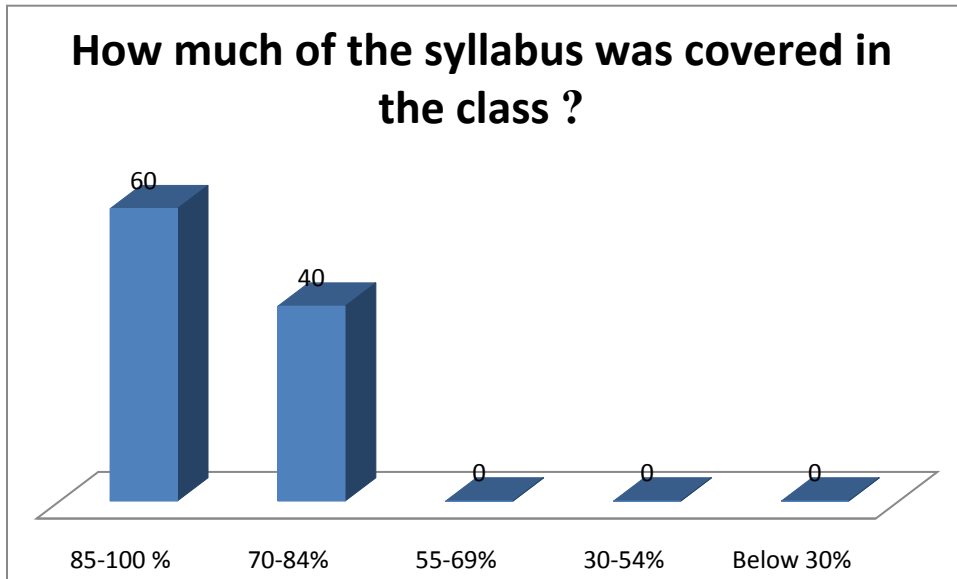
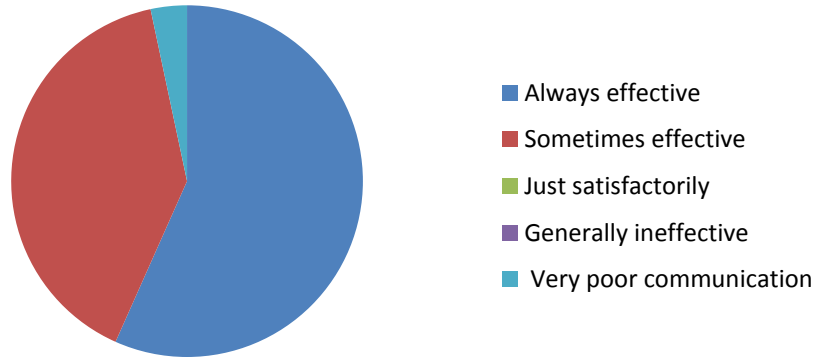


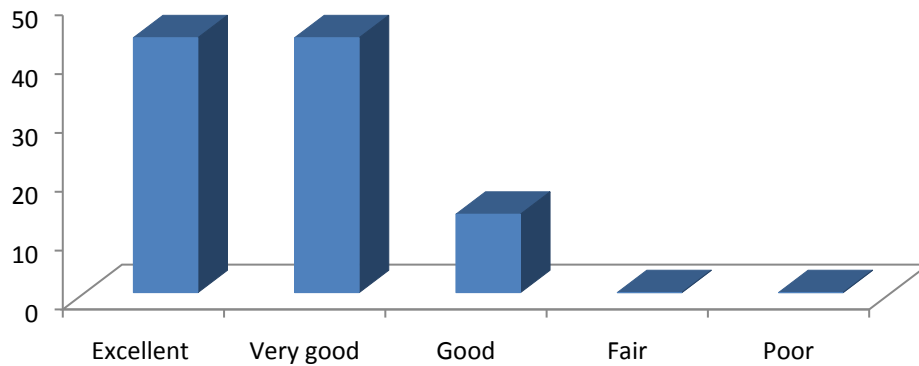
STUDENT SATISFACTION SURVEY



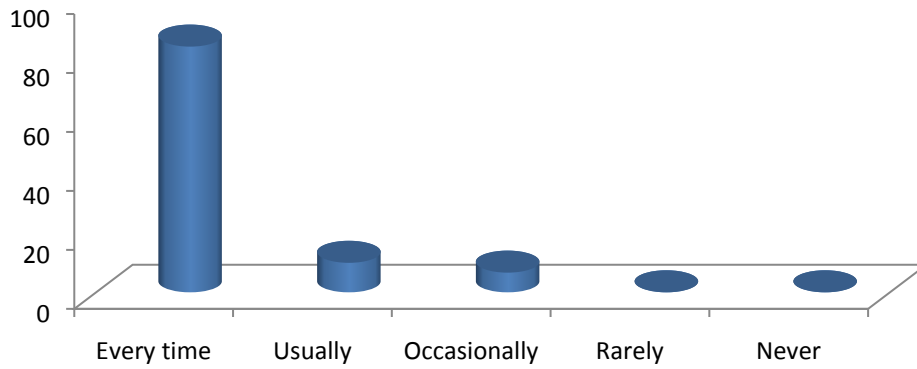
How well were the teachers able to communicate?



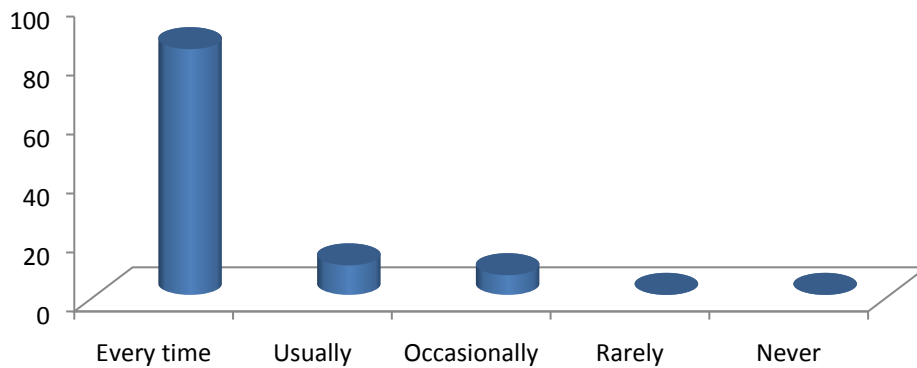
The teacher's approach to teaching can best be described as



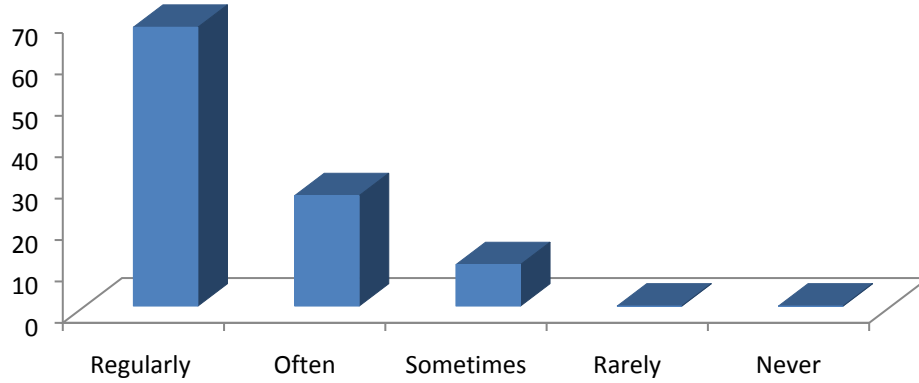
Was your performance in assignments discussed with you?



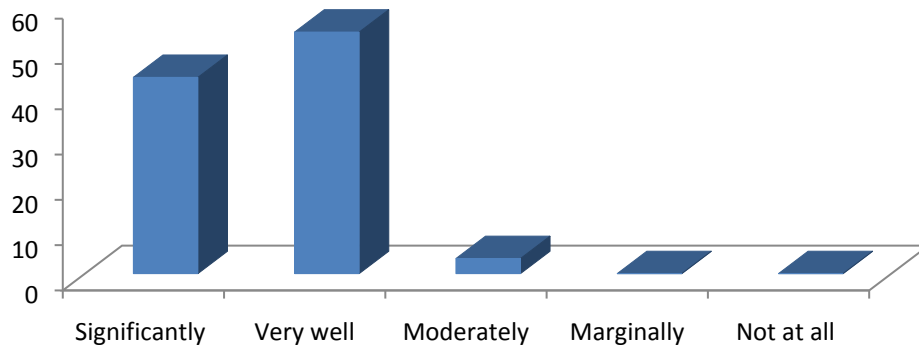
Your mentor does a necessary follow-up with an assigned task to you



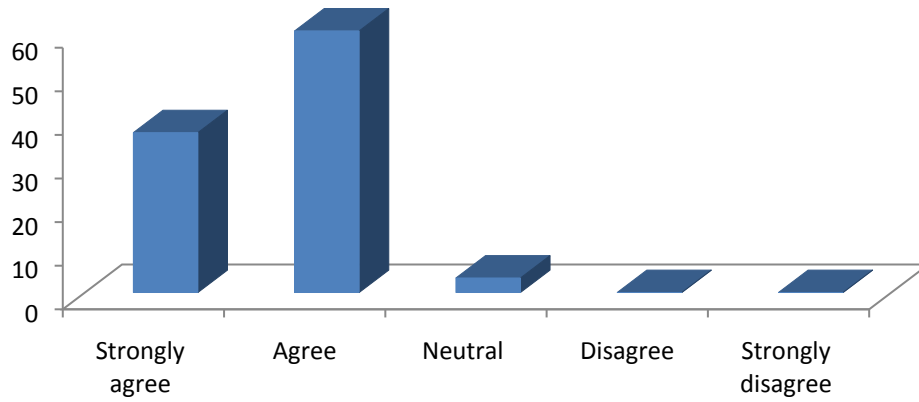
The institute takes active interest in promoting internship, student exchange, field visit opportunities for students



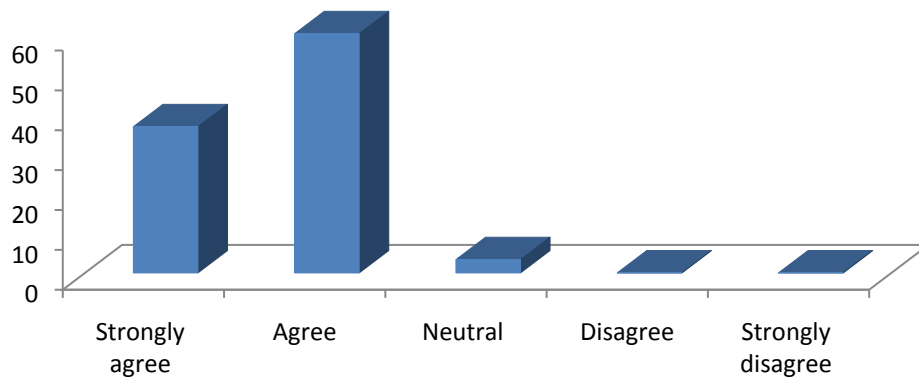
The teaching and mentoring process in your institution facilitates you in cognitive, social and emotional growth



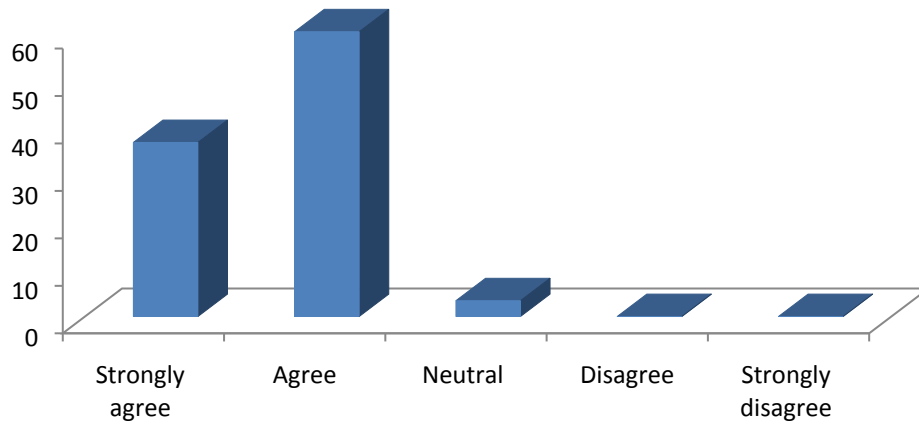
The institution provides multiple opportunities to learn and grow



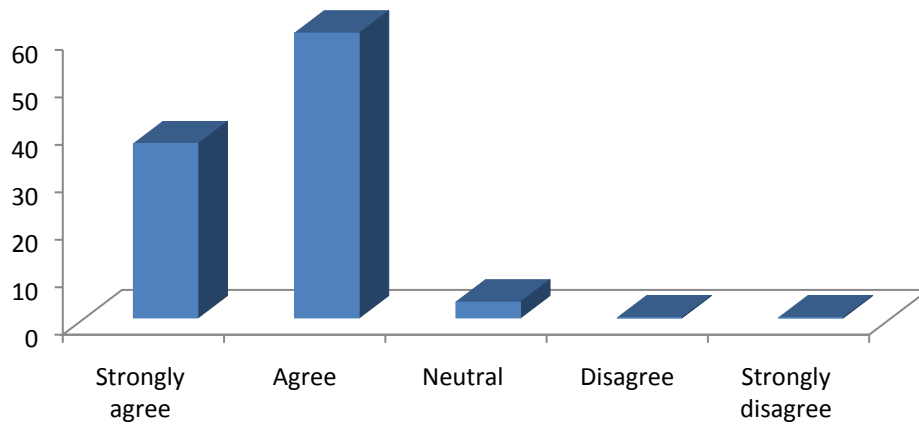
The institution makes effort to engage students in the monitoring, review and continuous quality improvement of the teaching learning process



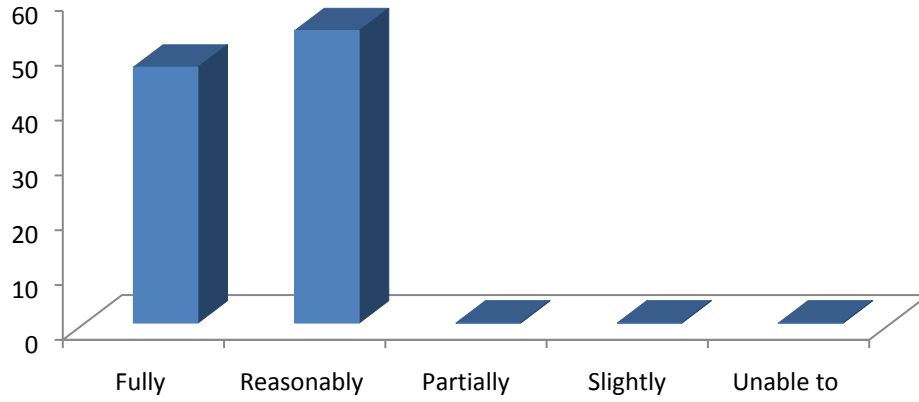
Teachers encourage you to participate in extracurricular activities



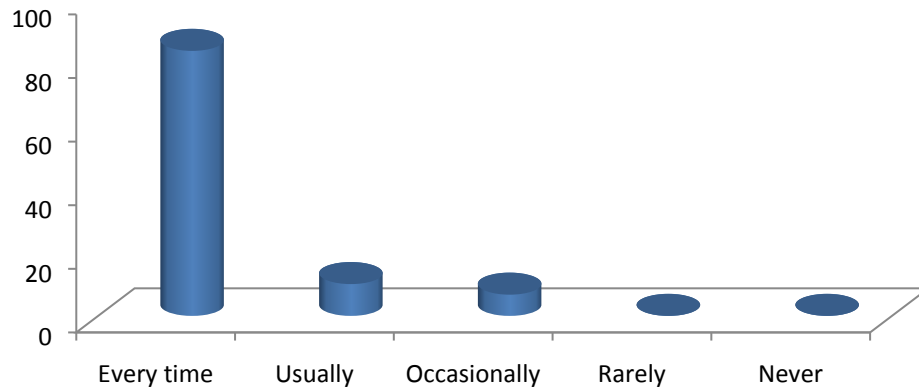
The overall quality of teaching – learning process in your institute is very good



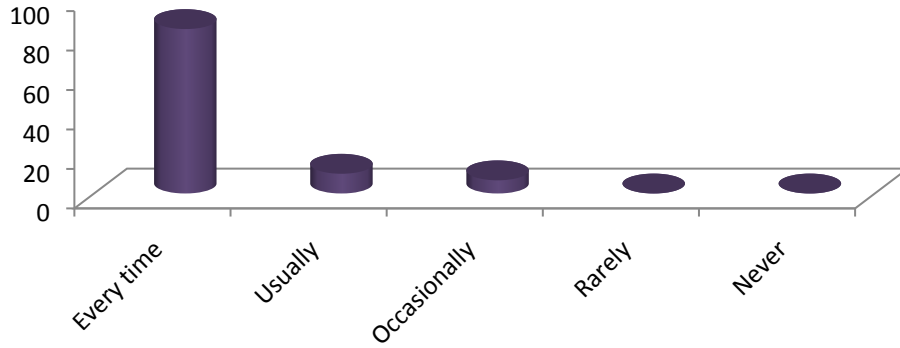
The teachers identify your strengths and encourage you with providing right level of challenges.



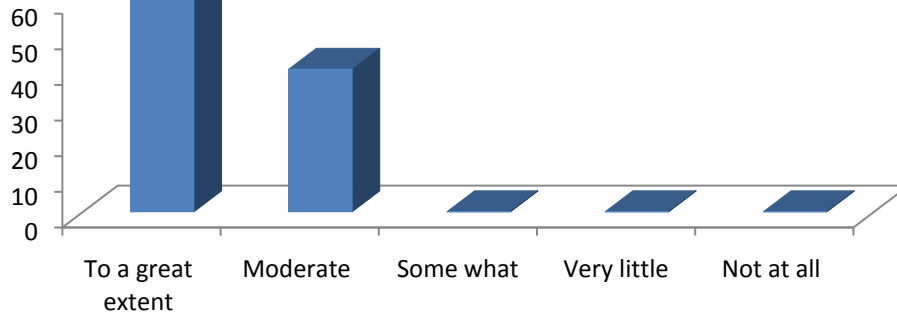
Teachers are able to identify your weaknesses and help you to overcome them



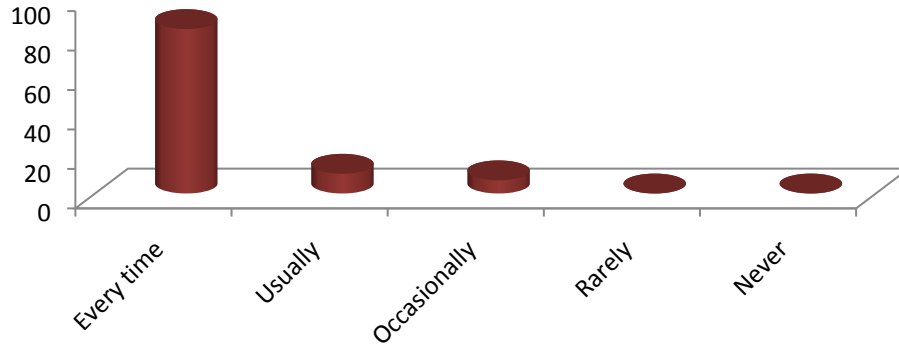
Teachers inform you about your expected competencies, course outcomes and programme outcomes



The institute / teachers use student centric methods, such as experiential learning, participative learning and problem solving methodologies for enhancing learning experiences



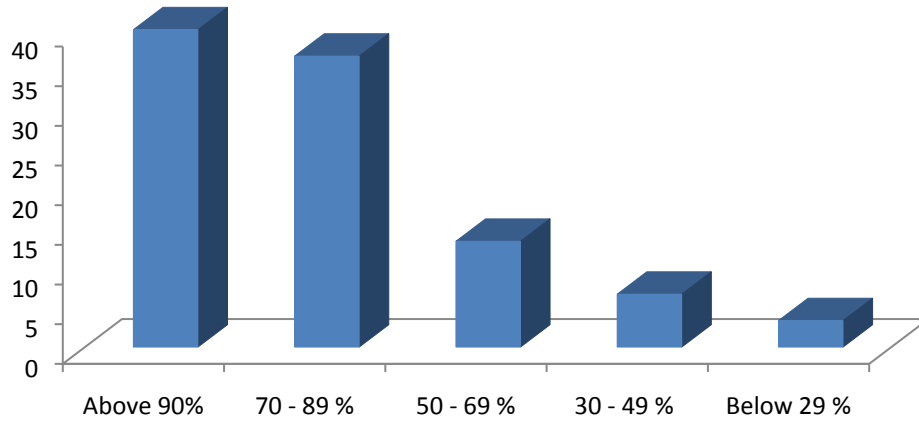
The teachers illustrate the concepts through examples and applications



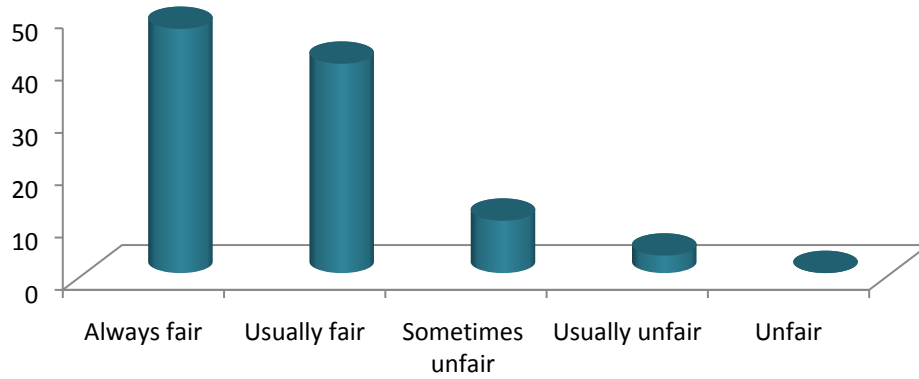
Efforts are made by the institute / teachers to inculcate soft skills, life skills and employability skills to make you ready for the world of work



What percentage of teachers use ICT tools such as LCD projector, Multimedia, etc. while teaching



Fairness of the internal evaluation process by the teachers



4. The teacher's approach to teaching can best be described as

- 4 - Excellent
- 3 - Very good
- 2 - Good
- 1 - Fair
- 0 - Poor

5. Fairness of the internal evaluation process by the teachers.

- 4 - Always fair
- 3 - Usually fair
- 2 - Sometimes unfair
- 1 - Usually unfair
- 0 - Unfair

6. Was your performance in assignments discussed with you?

- 4 - Every time
- 3 - Usually
- 2 - Occasionally/Sometimes
- 1 - Rarely
- 0 - Never

7. The institute takes active interest in promoting internship, student exchange, field visit

opportunities for students.

- 4 - Regularly
- 3 - Often
- 2 - Sometimes
- 1 - Rarely
- 0 - Never

8. The teaching and mentoring process in your institution facilitates you in cognitive,

social and emotional growth.

- 4 - Significantly
- 3 - Very well
- 2 - Moderately
- 1 - Marginally
- 0 - Not at all

9. The institution provides multiple opportunities to learn and grow.

- 4 – Strongly agree
- 3 - Agree
- 2 - Neutral
- 1 - Disagree
- 0 – Strongly disagree

10. Teachers inform you about your expected competencies, course outcomes and programme outcomes.

- 4 –Every time
- 3 - Usually
- 2 –Occasionally/Sometimes
- 1 - Rarely
- 0 – Naver

11. Your mentor does a necessary follow-up with an assigned task to you.

- 4 – Every time
- 3 – Usually
- 2 –Occasionally/Sometimes
- 1 - Rarely
- 0 – I don't have a mentor

12. The teachers illustrate the concepts through examples and applications.

- 4 – Every time
- 3 – Usually
- 2 – Occasionally/Sometimes
- 1 - Rarely
- 0 – Never

13. The teachers identify your strengths and encourage you with providing right level of challenges.

- 4 – Fully
- 3 – Reasonably
- 2 – Partially
- 1 - Slightly
- 0 – Unable to

14. Teachers are able to identify your weaknesses and help you to overcome them.

- 4 – Every time
- 3 – Usually
- 2 – Occasionally/Sometimes
- 1 - Rarely
- 0 – Never

15. The institution makes effort to engage students in the monitoring, review and continuous quality improvement of the teaching learning process.

- 4 – Strongly agree
- 3 – Agree
- 2 – Neutral
- 1 - Disagree
- 0 – Strongly disagree

16. The institute / teachers use student centric methods, such as experiential learning, participative learning and problem solving methodologies for enhancing learning experiences.

- 4 – To a great extent
- 3 – Moderate
- 2 – Some what
- 1 – Very little
- 0 – Not at all

17. Teachers encourage you to participate in extracurricular activities.

- 4 – Strongly agree
- 3 – Agree
- 2 – Neutral
- 1 - Disagree
- 0 – Strongly disagree

18. Efforts are made by the institute / teachers to inculcate soft skills, life skills and employability skills to make you ready for the world of work.

- 4 – To a great extent
- 3 – Moderate
- 2 – Some what
- 1 – Very little
- 0 – Not at all

19. What percentage of teachers use ICT tools such as LCD projector, Multimedia, etc.

while teaching.

4 – Above 90%

3 - 70 - 89 %

2 - 50 - 69 %

1 - 30 - 49 %

0 - Below 29 %

20. The overall quality of teaching – learning. process in your institute is very good.

4 – Strongly agree

3 - Agree

2 - Neutral

1 - Disagree

0 – Strongly disagree

21. Give three observation / suggestions to improve the overall teaching – learning experience in your institution.

a)

b)

c)